



CREATING POWERFUL  
**CONNECTIONS**

**PRODUCT CATALOG**

**PLUMBING**



(810) 503-9000



[www.fernco.com](http://www.fernco.com)

SCAN HERE FOR  
DIGITAL COPY





# BABA

BUILD BUY

# AMERICA



Up to  
**10x**  
Greater Strength and  
Shear Resistance  
Than Standard Flexible  
Couplings

Proudly Made in the  
**USA**  
Femco has been a trusted  
U.S. Manufacturer for  
Over 60 Years

Shielded RC Couplings for  
**ANY**  
Drain, Waste and Vent  
Pipe Material

**STRONG BACK**  
RC COUPLINGS IIII

PREMIER  
1000 RC

NUT & BOLT  
5000 RC

BABA & AIS COMPLIANT  
6000 RC

# CONTENTS

## FLEXIBLE COUPLINGS

Standard Flexible Couplings	4
Proflex Specialty Couplings	6
1000 RC Series	8
6000 RC Series	8
5000 RC Series	9
XL Couplings	10
Flexible Chemical Couplings	11
The HULK Coupling	12
Dual Puddle Flange	14
No Hub Couplings	15
Plastic Socket	15
Pipe Sleeves	15
Expansion Joints	16
Qwik Tee's & Ell's	16
Western Stop & Bushing	16
Corrugated Pipe Couplings	17
High Torque Corrugated Pipe Couplings	17
Ultra-Rib Sewer Pipe Couplings	18
Eccentric Bushings & Couplings	18
Large Diameter	18
Expanded Range LDC	18
Stainless Steel Clamps	19
Custom Large Diameter Debris Caps	19
Qwik Caps	20

## LATERAL CONNECTIONS

Tee & Wye Tap Saddles	21
Tap Saddle Pressure Kit	21
QwikSeal	22

## INTERNAL SEALS

ICON Pushfit	24
Fernco Donuts	25
Fernco O-Rings	25
Multi-Tite Pipe Gaskets	26
Concrete Manhole Adapters	26
Large Diameter CMA's	26
Wax Free Toilet Seal	27
Wax Free Urinal Seal	27

## WATER MANAGEMENT

StormDrain Plus	28
Sump Pump Check Valve	29
Water Well Debris Traps	29
Downspout Connectors	29

## SEALANTS

Pow-R Patch	30
Pow-R Wrap	30
Pow-R Industrial	30

## FLEXIBLE CONNECTORS

Hose Bibbs	31
Flexible Qwik Traps	31
Drain & Trap Connectors	31
Tubular Drain Pipe Connectors	32
Dishwasher Drain Connector	32
Shower Drain Connector	32
Fix-A-Flange	33
Utility Connectors	33
Hose Grip Washer Connector	33

## RESOURCES

### COUPLING SIZING CHARTS

Clay to Clay	34
Clay to Cast Iron, Plastic or Steel	35
Clay to Ductile Iron	36
Concrete to Concrete	37
Concrete to Clay	38
Concrete to Cast Iron, Plastic, or Steel	38
Ductile Iron to Cast Iron, Plastic, or Steel	39
Ductile Iron to Ductile Iron	40
Cast Iron, Plastic, Steel to Cast Iron, Plastic, Steel	41
Concrete to Ductile Iron	43

Plumbing Market Sales Reps	44
Waterworks Market Sales Reps	46
Acid Resistance Chart	48
Terms & Warranty	49
Compliant Couplings - QSR	50
Connection Solutions	51

# Standard Flexible Couplings



Flexible Couplings

For a coupling to perform like a Fernco...

## ***IT MUST SAY FERNCO***

Manufactured of tough elastomeric polyvinyl chloride (PVC), Fernco couplings are strong, resilient and not affected by soil conditions. Due to the nature and physical properties of their material, they are also resistant to chemicals, ultra-violet rays, fungus growth and normal sewer gases. Our couplings are leak-proof, rot-proof and seal against infiltration and exfiltration.

Because of their quality and ease of installation, Fernco flexible couplings have found approval among plumbers, contractors and municipalities across the globe. Fernco couplings are used for all types of in-house and sewer applications such as drain, waste, vent piping, house-to-main, cut-ins, conductors, roof-drains and more.

All couplings are clearly marked with part number, size, and the materials that the coupling will connect to. Fernco has fast lead times with no minimum order required. For special applications, our custom design service can supply couplings for individual customer requirements. Our Flexible Couplings are the industry standard.

**Fernco's specially formulated PVC compound positively seals any sewer and drain connection.**



Coupling 1056-075

## Available from 3/4" and larger

- Seals against infiltration and exfiltration
- Leak-proof, root-proof and resistant to many chemicals, ultra violet rays, fungus growth and normal sewer gas
- Connects pipes of same or different materials and sizes
- Corrosion-resistant and rust-proof stainless steel clamps
- Made of elastomeric polyvinyl chloride (PVC)
- 4.3 PSI maximum test pressure
- 140°F maximum intermittent operating temperature
- 120°F maximum consistent operating temperature

Coupling Series	Material Type	Chart Page Number
1001 & 5001	Clay to Clay	Page 38
1002 & 5002	Clay to Cast Iron, Plastic or Steel	Page 39
1003 & 5003	Clay to Ductile Iron	Page 40
1004 & 5004	Concrete to Concrete	Page 41
1005	Concrete to Clay	Page 42
1006 & 5006	Concrete to Cast Iron, Plastic or Steel	Page 42
1051 & 5051	Ductile Iron to Cast Iron, Plastic or Steel	Page 43
1055 & 5055	Ductile Iron to Ductile Iron	Page 44
1056 & 5056	Cast Iron, Plastic, Steel to Cast Iron, Plastic, Steel	Page 45
1057 & 5057	Concrete to Ductile Iron	Page 47

**Complies with  
ASTM D5926 and  
C1173, CSA B602**



Flexible Couplings

## High Torque Clamps

**STANDARD on all 18" and larger couplings\***

Fernco makes the most complete line of couplings in the industry, from sizes 3/4" and larger. Custom large diameter couplings are available, along with shielded transitional couplings to ensure all pipes, underground and above-ground, can be connected with a Fernco coupling. Because Fernco couplings have earned a reputation for superior performance, you can have full confidence in our quality and reliability.



- \* **5000 Series (316 Series)** - 60lb. torque all sizes
- \* **6000 Series (300 Series)** - 60lb. torque all sizes



# PROFLEX®

Specialty Couplings By *Fernco, Inc.* 

## *Above-ground transition couplings that create resilient pipe joints.*

Connects 3/4" - 8" cast iron, plastic, steel, copper and tubular pipe

### Technical Data

Complies with ASTM C1460 and ASTM C 564, CSA B602



#### Shield Assembly Requirements

**Clamp:** 300 stainless steel

Band - 301 stainless steel .025 x .500 x length

Housing - 301 stainless steel

Screw - 305 stainless steel 5/16" hex - no slot

**Shield:** 301 stainless steel .012 x 2.125 x length

**Eyelet:** 305 stainless steel

**Installation Torque:** 60 in-lbs. installation torque

**Maximum test pressure:** 4.3 psi

**Maximum operating temperature:** 180° F

**Shielded design to resist shear forces above-ground**



Flexible Couplings

### 3000 Series : CI to PL, ST, XHCI

Part Number	Description
3000-150	1.5" CI, PL or ST to 1.5" CI, PL, ST
3000-215	2" CI, PL, ST or XHCI to 1.5" CI, PL, ST
3000-22	2" CI, PL, ST or XHCI to 2" CI, PL, ST or XHCI
3000-33	3" CI to 3" PL, ST, XHCI
3000-43	4" CI to 3" PL, ST, XHCI
3000-44	4" CI to 4" PL, ST, XHCI
3000-55	5" CI to 5" PL, ST, XHCI
3000-66	6" CI to 6" PL, ST, XHCI
3000-88	8" CI to 8" PL, ST, XHCI

### 3001 Series : CI to CPR

Part Number	Description
3001-110	1.5" CI, PL or ST to 1" CPR or 3/4" PL
3001-1125	1.5" CI, PL or ST to 1.25" CPR or 1" PL
3001-150	1.5" CI, PL, ST to 1.5" CPR or 1.25" PL
3001-2125	2" CI, PL, ST to 1.25" CPR or 1" PL
3001-215	2" CI, PL, ST to 1.5" CPR or 1.25" PL
3001-22	2" CI, PL or ST to 2" CPR
3001-315	3" CI to 1.5" CPR or 1.25" PL
3001-32	3" CI to 2" CPR
3001-33	3" CI to 3" CPR
3001-43	4" CI to 3" CPR
3001-44	4" CI to 4" CPR

### 3002 Series : CI, PL, ST to Tubular

Part Number	Description
3002-150	1.5" CI, PL or ST to 1.5" Tubular
3002-155	1.5" Tubular to 1.5" Tubular
3002-215	2" CI, PL or ST to 1.5" Tubular

### 3003 Series : CPR to CPR

Part Number	Description
3003-150	1.5" CPR to 1.5" CPR or 1.25" PL
3003-215	2" CPR to 1.5" CPR or 1.25" PL
3003-22	2" CPR to 2" CPR
3003-33	3" CPR to 3" CPR

### 3004 Series : CI to CI, PL or ST

Part Number	Description
3004-320	3" CI to 2" CI, PL or ST
3004-420	4" CI to 2" CI, PL or ST
3004-430	4" CI to 3" CI
3004-540	5" CI to 4" CI

### 3005 Series : PL, ST or XHCI to PL, ST or XHCI

Part Number	Description
3005-33	3" PL, ST or XHCI to 3" PL, ST or XHCI
3005-43	4" PL, ST or XHCI to 3" PL, ST or XHCI
3005-44	4" PL, ST or XHCI to 4" PL, ST or XHCI
3005-66	6" PL, ST or XHCI to 6" PL, ST or XHCI

### 3006 Series : CPR to CI, PL or ST

Part Number	Description
3006-215	2" CPR to 1.5" CI, PL, or ST
3006-32	3" CPR to 2" CI, PL or ST
3006-43	4" CPR to 3" CI

### 3007 Series : PL, ST or XHCI to CPR

Part Number	Description
3007-32	3" PL, ST or XHCI to 2" CPR
3007-33	3" PL, ST or XHCI to 3" CPR
3007-43	4" PL, ST or XHCI to 3" CPR
3007-44	4" PL, ST or XHCI to 4" CPR

### 3008 Series : PL, ST or XHCI to CI, PL or ST

Part Number	Description
3008-32	3" PL, ST or XHCI to 2" CI, PL or ST

### 3009 Series : Thinwall PL to Sch.40 PL

Part Number	Description
3009-33	3" Thinwall PL to 3" Sch.40 PL
3009-44	4" Thinwall PL to 4" Sch.40 PL

### 3010 Series: CPR to Tubular

Part Number	Description
3010-150	1.5" CPR to 1.5" Tubular
3010-215	2" CPR to 1.5" Tubular

NHCI: No-Hub Cast Iron  
 PL: Sch 40. Plastic  
 ST: Steel (IPS)  
 XHCI: Extra-Heavy Cast Iron  
 CPR: Copper



Flexible Couplings

# STRONG BACK

## RC COUPLINGS IIII



Flexible Couplings

### 1000 RC Series

#### TECHNICAL DATA

Complies with **ASTM D5926** and **C1173, CSA B602**



- Hardness, Shore "A", Inst. +5...65
- Tensile Strength Min. psi: 1000
- Tear Strength Min.: 150 lbf/in
- Brittleness Temperature: -40°F

#### 1000 RC Series Clamps

- Clamp housing - 301 stainless steel
- Clamp Band - 301 stainless steel
- Clamp screw - 305 stainless steel
- Installation torque 60 lb/in
- High torque clamps installation torque 120 lb/in where applicable

NEW

### 6000 RC Series AMERICAN IRON AND STEEL (AIS) COMPLIANT

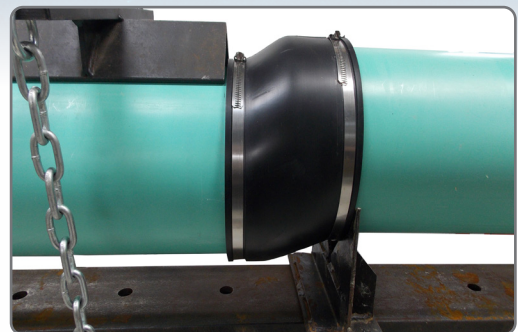
#### TECHNICAL DATA

#### Shear Ring

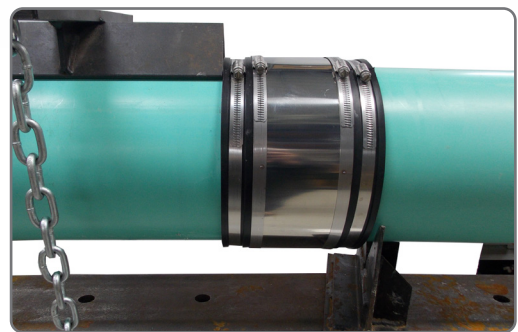
- .012" Thick, 300 Series Stainless Steel
- Width manufactured according to coupling width (1.5", 2.13" or 3.75")
- Length manufactured according to coupling diameter
- Clamps spot welded in place

#### Coupling

- 140°F maximum intermittent operating temperature
- 120°F maximum consistent operating temperature



Shear Resistance Test using an unshielded sewer coupling per ASTM C 1173 applied load 50 lbs per nominal inch of pipe diameter



Shear Resistance Test using a Fernco 1000 RC coupling per ASTM C 1173 applied load 50 lbs. per nominal inch of pipe diameter



# Engineered for Strength and Precision Beneath the Surface



## 5000 RC Series

### TECHNICAL DATA

Complies with **ASTM D5926** and **C1173, CSA B602**



- Hardness, Shore "A", Inst. ++5...65
- Tensile Strength Min. psi: 1000
- Tear Strength Min.: 150 lbf/in
- Brittleness Temperature: -40°F

### 5000 RC Series Clamps

- Clamp Band - 316 stainless steel
- 6" and larger couplings incorporate two nut and bolt take-up points per band
- Installation torque 60 lb/in
- Nut and bolt design ensures strong clamping, ideal for extreme environments

### Shear Ring

- .012" Thick, 300 Series Stainless Steel
- Width manufactured according to coupling width (1.5", 2.13" or 4")
- Length manufactured according to coupling diameter
- Clamps spot welded in place

### Coupling

- 140°F maximum intermittent operating temperature
- 120°F maximum consistent operating temperature

Designed to **resist heavy earth loads** and shear forces underground while **providing improved pipe alignment.**

Flexible Couplings

**CUSTOM CONNECTIONS**  
**ANY SIZE. ANY MATERIAL.**

# XL COUPLINGS

**EXTRA Length.**  
**EXTRA Strength.**



## Technical Data

**Complies with ASTM C 1173, D 5926, CSA B602**

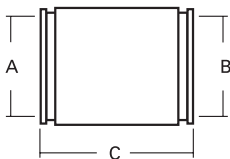
- Hardness, Shore "A", Inst.  $\pm 5$ ..... 65
- Tensile Strength, Min. psi ..... 1000
- Elongation at Rupture, Min. % .250
- Tear Strength, Min ..... 150 in/lb.
- Brittleness Temperature .....  $-40^{\circ}\text{F}$

### Clamps

- 300 Series Stainless Steel
- Installation torque ..... 60 in/lb.

### Shear Ring

- .012" thick, 300 Series Stainless Steel



Flexible Couplings

Part Number	Description	A	B	C
		in.	in.	in.
*1056-1502	1 1/2" CI/PL/Steel to 1 1/2" CI/PL/Steel	1.90	1.90	6.88
*1056-1502RC	1 1/2" CI/PL/Steel to 1 1/2" CI/PL/Steel	1.90	1.90	6.88
*1056-222	2" CI/PL/Steel to 2" CI/PL/Steel	2.38	2.38	7.75
*1056-222RC	2" CI/PL/Steel to 2" CI/PL/Steel	2.38	2.38	7.75
*1056-332	3" CI/PL/Steel to 3" CI/PL/Steel	3.40	3.40	7.75
*1056-332RC	3" CI/PL/Steel to 3" CI/PL/Steel	3.40	3.40	7.75
*1056-442	4" CI/PL/Steel to 4" CI/PL/Steel	4.40	4.40	7.75
*1056-442RC	4" CI/PL/Steel to 4" CI/PL/Steel	4.40	4.40	7.75
*1056-443	4" CI/PL/Steel to 4" CI/PL/Steel	4.40	4.40	11.63
*1056-443RC	4" CI/PL/Steel to 4" CI/PL/Steel	4.40	4.40	11.63
*1056-552	5" CI/PL/Steel to 5" CI/PL/Steel	5.51	5.51	7.85
*1056-552RC	5" CI/PL/Steel to 5" CI/PL/Steel	5.51	5.51	7.85

Part Number	Description	A	B	C
		in.	in.	in.
1056-662RC	6" CI/PL to 6" CI/PL	6.63	6.63	10.00
1056-882	8" CI/PL to 8" CI/PL	8.64	8.64	10.00
1056-882RC	8" CI/PL to 8" CI/PL	8.64	8.64	10.00
1056-10102	10" CI/PL to 10" CI/PL	10.75	10.75	10.00
1056-10102RC	10" CI/PL to 10" CI/PL	10.75	10.75	10.00
1056-12122	12" CI/PL to 10" CI/PL	12.75	12.75	10.00
1056-12122RC	12" CI/PL to 10" CI/PL	12.75	12.75	10.00
1002-442RC	4" Clay to 4" PL/CI	5.40	4.50	10.00
1002-662RC	6" Clay to 6" PL/CI	7.50	6.60	10.00
1002-882RC	8" Clay to 8" PL/CI	9.65	8.65	10.25
1002-10102RC	10" Clay to 10" PL/CI	12.50	10.50	10.25
1002-12122RC	12" Clay to 12" PL/CI	14.50	12.50	10.25

\*Equipped with two clamps per coupling - not including shield.

# Flexible Chemical Couplings

Fernco Chemical Couplings provide a flexible and watertight connection on drainage systems that require a high chemical resistance to a wide range of chemicals. Manufactured to meet specific site requirements, Fernco Chemical Couplings withstand the widest possible range of chemicals, due to the shear band and clamping bands encasing a high-performance elastomeric sleeve with a chemically resistant one-piece Fluoropolymer (FEP) liner and PTFE seals.

- Transitions dissimilar chemical piping and sizes
- Chemical resistant drain system, connects chemical waste piping to chemical waste tanks
- One piece Fluoropolymer liner
- Suitable for above & below ground
- Max temp: 212°F consistent, 266°F intermittent
- Minimum temperature -50°F
- 4.3 PSI maximum test pressure
- Custom sizes available upon request

**Complies with  
ASTM C 1173  
and BS EN 681-1**



Chemical Resistance Chart Available Here



Part Number	Description	Min. Inch	Max. Inch
CC56G	1 1/2" PL/CI/GL	1.73"	2.09"
CC65G	2" PL/CI/GL or 1 1/2" DU	2.13"	2.60"
CC75G	2" DU or 2 1/2" PL	2.64"	3.11"
CC100G	3" PL/CI/GL	3.15"	3.50"
CC115G	3" DU/DI	3.54"	4.29"
CC125G	4" PL/CI/GL/DU/DI	4.33"	5.20"
CC180G	6" PL/CI/GL/DU/DI	6.22"	7.01"
CC225G	8" PL/CI/GL/DU/DI	8.35"	9.21"
CC275G	10" CI/GL	9.25"	10.59"
CC290G	10" PL/DU/DI	10.63"	12.09"
CC335G	12" PL/CI/GL	12.25"	12.75"
CC345G	12" DU/DI	12.75"	13.50"

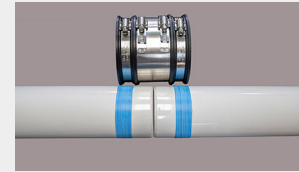
## Installation Steps:



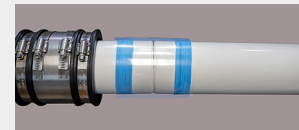
1. Chamfer and deburr both pipe ends.



2. Mark the pipes adjacent to the coupling bands.



3. Apply Ten (10) layers of PTFE tape directly over the lines on the pipe.



4. Center the FEP liner over the pipe ends and PTFE tape.



5. Use a heat gun to shrink the FEP liner to the pipe.



6. Center the coupling and tighten the bands.



7. Ensure all bands are tightened to 60 inch pound.



8. Test for leaks.

# THE HULK COUPLING

**STRONG. FLEXIBLE. STEEL REINFORCED UNIVERSAL COUPLING.**



U.S. Patent No. D956937

Flexible Couplings

## UNIVERSAL SEWER & DRAIN REPAIR COUPLING BENEFITS

- One **universal coupling** connects most pipe materials
- One coupling per nominal size
- Heavy duty, multi-dimensional, non-shear sewer & drain coupling
- **Protects the pipe against ground movement**
- Corrosion resistant, high torque stainless steel clamps up to 120 in./lbs
- **Embedded with Stainless Steel Rods for shear resistance**

Complies with ASTM C 1173 and CSA B602



One **HULK** Coupling per nominal pipe size connects most common pipe materials.

Part Number	Size	Dimensional Range
HULK4	4"	4.20" - 5.60"
HULK5	5"	5.30" - 6.70"
HULK6	6"	6.20" - 8.00"
HULK8	8"	8.40" - 10.15"
HULK10	10"	10.50" - 12.75"
HULK12	12"	12.50" - 15.30"

# THE MOST VERSATILE FERNCO COUPLING EVER.

SCAN HERE TO  
SEE IT IN ACTION



Flexible Couplings

## EXPANSIVE POSSIBILITIES



CAST IRON TO CONCRETE



CLAY TO SDR 35



DUCTILE IRON TO SCH 40



CAST IRON TO SDR 35

**NEW**



# DUAL PUDDLE FLANGE



Flexible Couplings

## FEATURES

### VERSATILE INSTALLATION:

Suitable for both horizontal and vertical applications, fitting a variety of pipe materials

### NEW DESIGN | FASTER INSTALLATION:

Streamlined design simplifies installation, reducing setup time and minimizing hassle

### DURABLE CONSTRUCTION:

Made from EPDM rubber and secured with stainless steel bands for long-lasting performance

### TEMPERATURE RESISTANT:

Operates effectively within a temperature range of -60°F to 180°F constant and up to 212°F intermittent

PART NO.	MIN. PIPE SIZE (INCHES)	MAX. PIPE SIZE (INCHES)
<b>SPECIAL ORDER</b>		
DPF400	15.39	16.34
DPF425	16.38	17.32
DPF450	17.36	18.32
DPF500	19.33	20.28
DPF525	20.31	21.26
DPF550	21.30	22.24
DPF575	22.28	23.23
DPF600	23.27	24.21
DPF630	24.25	25.20

PART NO.	MIN. PIPE SIZE (INCHES)	MAX. PIPE SIZE (INCHES)
<b>STOCKED</b>		
DPF25	.59	1.0
DPF32	1.01	1.38
DPF40	1.39	1.75
DPF50	1.76	2.20
DPF63	2.24	2.70
DPF75	2.75	3.35
DPF90	3.38	3.99
DPF110	4.00	4.52
DPF125	4.75	5.29
DPF140	5.30	5.99
DPF160	6.00	6.74
DPF175	6.75	7.50
DPF200	7.51	8.40
DPF225	8.41	9.35
DPF250	9.36	10.25
DPF275	10.26	11.25
DPF315	11.26	12.75
DPF325	12.76	13.50
DPF350	13.51	14.35
DPF375	14.36	15.30

# No Hub Couplings

Engineered to connect No-Hub cast iron pipe



Standard No-Hub		Med. Duty No-Hub		Heavy Duty No-Hub	
Part Number	Size	Part Number	Size	Part Number	Size
NH-150	1-1/2"	MD-150	1-1/2"	HD-150	1-1/2"
NH-22	2"	MD-22	2"	HD-22	2"
NH-33	3"	MD-33	3"	HD-33	3"
NH-44	4"	MD-44	4"	HD-44	4"
NH-55	5"	MD-55	5"	HD-55	5"
NH-66	6"	MD-66	6"	HD-66	6"
NH-88	8"	MD-88	8"	HD-88	8"
NH-1010	10"	MD-1010	10"	HD-1010	10"
NH-1212	12"				
NH-1515	15"				

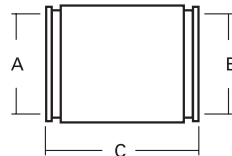
Conforms to CISPI 301 and complies with ASTM C 1277. Gasket meets the requirements of ASTM C 564. 60 in.lbs torque, 120 in.lbs for NH-1212 and NH-1515.

Conforms to CISPI 310, Factory Mutual CN 1680 and complies with ASTM C564, ASTM C1540, IAPMO file #3198. Gasket meets the requirements of ASTM C564. 80 in.lbs torque. Yellow color.

Conforms to CISPI 310, Factory Mutual EN 1680 and complies with ASTM C564, ASTM C1540, IAPMO file #3198. Gasket meets the requirements of ASTM C564. 80 in.lbs torque. Easily identified with green color.

# Plastic Socket

Socket-to-socket and socket-to-pipe connections



## Technical Data

- Compatible with plastic traps
- Shorten length to 3" or 2"
- Maximum pressure: 4.3 PSI

	A	B	C
Part Number	in.	in.	in.
1059-150	2.26	1.97	3.90
*1059-2/150	2.69	1.90	3.91
1059-22	2.70	2.40	3.91
*1059-32	3.99	2.38	3.99
1059-33	3.99	3.49	3.99
*1059-42	5.01	2.38	3.99
*1059-43	5.01	3.38	3.99
1059-44	5.01	4.50	3.99



Plastic Socket to Plastic Pipe

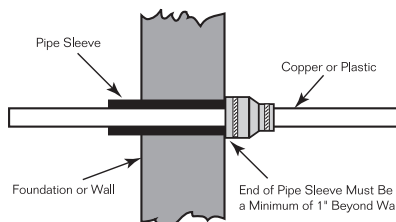


Plastic Socket to Plastic Socket

	A	B	C
Part Number	in.	in.	in.
1060-150	2.26	2.26	3.92
1060-22	2.70	2.70	3.95
1060-33	3.94	3.94	3.97
1060-44	5.01	5.01	3.97

# Pipe Sleeves

Seal pipe sleeves and carrier pipes



## Technical Data

- Above and below ground applications
- Maximum test pressure: 4.3 PSI

Part Number	Pipe Sleeve	Carrier Pipe
DTC-110	1-1/2"	3/4", 1" plastic or 1" copper
DTC-210	2"	3/4", 1" plastic or 1" copper
1056-315	3"	1-1/2"
1056-32	3"	2"
1056-415	4"	1-1/2"
1056-42	4"	2"
1056-43	4"	3"

Complies with ASTM D5926, C1173 and CSA B602

Flexible Couplings

# Expansion Joints

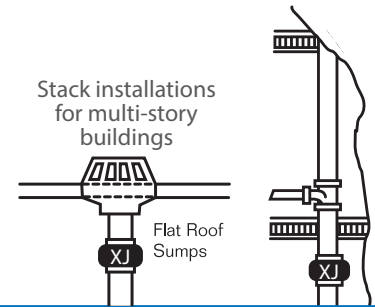
Thermal expansion and contraction of vertical pipes



## Technical Data

- Alternative for DWV offsets
- Residential and commercial applications
- Applicable for drain, waste and vent stacks, and interior rain water conductor systems
- Accommodates a maximum of 1½" pipe expansion and ½" contraction from a normal position
- **Above-ground use only**

Complies with CSA B602

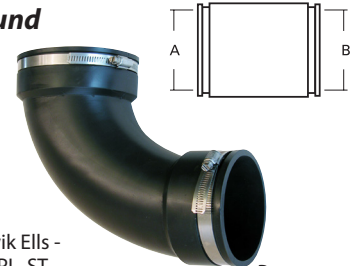
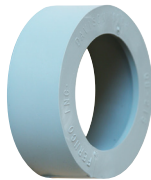


Part Number	Nominal Pipe Size
XJ-150	1-1/2"
XJ-2	2"
XJ-3	3"
XJ-4	4"

# Qwik Tee's & Ell's

Extra length for 90° and tee connections

Above-ground use only



Qwik Bushing-Reducer

Qwik Tees - CI, PL, ST

Qwik Ells - CI, PL, ST

Part Number	inch	inch
QB-150/125	1.90	1.65
QB-215	2.40	1.90
QB-32	3.50	2.40
QB-43	4.50	3.50

Part Number	inch	inch	inch
QT-150	1.90	1.90	1.90
QT-200	2.40	2.40	2.40
QT-300	3.50	3.50	3.50
QT-400	4.50	4.50	4.50

Part Number	inch	inch
QL-150	1.90	1.90
QL-200	2.40	2.40
QL-300	3.50	3.50
QL-400	4.50	4.50

Complies with ASTM D5926

# Western Series Center Stop

## Couplings

## Bushings

(Bushings Continued)

### Technical Data

- Bushings available for common 4", 6" and 8" transitions
- Sch. 40 PVC, ABS plastic and SDR-35 Plastic
- Bead, bald and plain-end cast iron
- Rough barrel and machined-end DI
- Ductile iron



Part Number	Size	Part Number	Size	Part Number	Size
1081-44	5.44" x 5.44" Clay to Clay	481-2.38	5.38" x 2.38" Clay x PECl	481-4.90	5.38" x 4.90" Clay x RBAC or CI 150 DI (B)
1081-66	8.00" x 8.00" Clay to Clay	481-3.38	5.38" x 3.38" Clay x PECl	681-6.38	7.98" x 6.37" Clay x PECl or PVC (J)
1081-88	10.00" x 10.00" Clay to Clay	481-3.50	5.38" x 3.50" Clay x Bead CI, PL, XHCl	681-6.63	7.98" x 6.62" Clay x ABS, Bead CI, MEAC (C)
1085-88	9.00" x 9.00" DI x DI	481-4.25	5.38" x 4.25" Clay x SDR-35 or PVC	881-8.38	10.18" x 8.42" Clay x PECl or PVC (J)
1086-33	3.40" x 3.40" CI or PL to CI or PL	481-4.38	5.38" x 4.39" Clay x PECl or Bald CI (J)	881-8.63	10.18" x 9.00" Clay x ABS, Bead CI, MEAC
1086-44	4.56" x 4.56" CI or PL to CI or PL	481-4.50	5.38" x 4.50" Clay x ABS or Sch. 40	881-9.00	10.18" x 9.00" Clay x RBAC or CI 150 DI (B)
		481-4.63	5.38" x 4.63" Clay x Bead CI or MEAC (C)	885-8.38	9.00" x 8.42" DI x PECl or PVC
				885-8.63	9.00" x 8.64" Clay x ABS, Bead CI, MEAC



# Corrugated Pipe Couplings

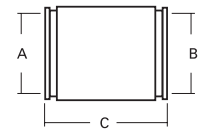
## Technical Data

- Available in 3", 4", 6" and 8" sizes
- Connects corrugated polyethylene drainage and irrigation systems to sewer, drain or DWV plastic pipe



\* Insert Bushing included

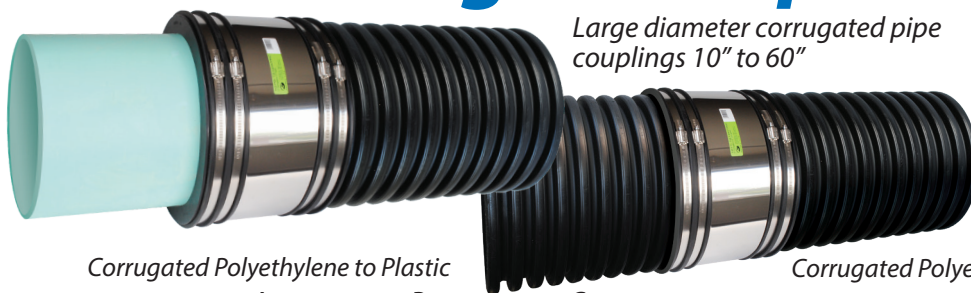
Connect ADS and Hancor corrugated polyethylene to plastic



Part Number	A in.	B in.	C in.
*1070-32	3.57	2.38	3.96
1070-33	3.57	3.44	3.96
*1070-42	4.76	2.38	3.94
*1070-43	4.76	3.38	3.94
1070-44	4.76	4.29	3.94
1070-415	4.43	1.91	3.95
*1070-63	6.83	3.38	5.91
*1070-64	6.83	4.38	5.91
*1070-65	6.83	5.50	5.91
1070-66	6.83	6.50	5.91
1070-83	9.76	3.50	5.70
*1070-84	9.76	4.38	5.70
*1070-86	9.76	6.38	5.70
1070-88	9.76	8.42	5.70

Complies with ASTM D5926

# HTRC Corrugated Pipe Couplings



Large diameter corrugated pipe couplings 10" to 60"

## Technical Data

- **High Torque Clamps:** 316 Series Stainless Steel.
- **Sealing Gasket:** Flexible PVC making 360° contact.

Corrugated Polyethylene to Plastic

Corrugated Polyethylene to Corrugated Polyethylene

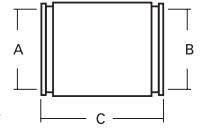
Part Number	A in.	B in.	C in.	Part Number	A in.	B in.	C in.
1070-10-4HTRC	11.6	4.5	6.0	**1071-33RC	3.94	3.94	3.97
1070-10-6HTRC	11.6	6.625	6.0	**1071-44RC	4.74	4.74	3.95
*1070-10-8HTRC	11.6	8.4	6.0	**1071-66RC	6.90	6.90	5.95
*1070-1010HTRC	11.6	10.5	6.0	**1071-88RC	9.48	9.48	6.0
1070-12-4HTRC	14.4	4.5	10.0	1071-1010HTRC	11.6	11.6	6.0
1070-12-6HTRC	14.4	6.625	10.0	1071-12-6HTRC	14.4	7.2	10.0
1070-12-8HTRC	14.4	8.625	10.0	1071-12-8HTRC	14.4	9.65	10.0
*1070-1210HTRC	14.4	10.5	10.0	1071-1212HTRC	14.4	14.4	10.0
*1070-1212HTRC	14.4	12.5	10.0	1071-1515HTRC	17.7	17.7	10.0
1070-15-6HTRC	17.7	6.625	10.0	1071-1818HTRC	21.3	21.3	10.0
1070-1512HTRC	17.7	12.6	10.0	1071-2424HTRC	28.1	28.1	10.0
*1070-1515HTRC	17.7	15.3	10.0	1071-3030HTRC	35.4	35.4	10.0
*1070-1818HTRC	21.3	18.7	10.0	1071-3636HTRC	41.6	41.6	10.0
*1070-2424HTRC	28.1	24.8	10.0	1071-4242HTRC	47.7	47.7	10.0
*1070-3030HTRC	35.4	31.5	10.0	1071-4848HTRC	54.1	54.1	10.0
*1070-3636HTRC	41.6	39.4	10.0	1071-5454HTRC	61.0	61.0	10.0
*1070-4242HTRC	47.7	44.5	10.0	1071-6060HTRC	66.8	66.8	10.0
*1070-4848HTRC	54.1	50.8	10.0				

Additional sizes available upon request.

\* Insert Bushing included

\*\* Standard 300 Series Clamps - 60lbs.

Flexible Couplings



# Ultra-Rib Sewer Pipe Couplings

Efficiently connect ETI to Ductile Iron or ETI to SDR-35

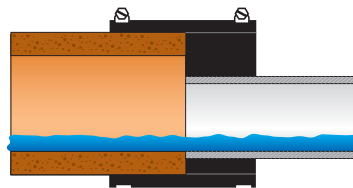


ETI to SDR-35 Plastic				ETI to Ductile Iron			
Part Number	A in.	B in.	C in.	Part Number	A in.	B in.	C in.
1072-1212	14.00	14.00	10.00	*1073-1212	14.00	12.25	10.00
1072-1515	16.80	16.80	10.00	*1073-1515	16.80	15.30	10.00
1072-1818	20.30	20.30	10.00	*1073-1818	20.30	18.75	10.00
1072-2121	23.75	23.75	10.00	*1073-2121	23.75	21.60	10.00
1072-2424	26.75	26.75	10.00	*1073-2424	26.00	24.80	10.00

Complies with ASTM D5926

# Eccentric Bushings & Couplings

Maintain a continuous flow-line in critical grade conditions



Complies with ASTM D5926 and C1173

## Technical Data

- Available for all common sewer pipe
- 300 series stainless steel clamps
- Maximum test pressure 4.3 PSI
- Improves internal pipe alignment
- Improves water flow

Flexible Couplings

# Large Diameter

For non-standard or special size applications

## Technical Data

- 10 inches wide
- 316 stainless steel high torque clamps with multiple take up points
- Up to 120-lbs of torque for greater sealing pressure

\*Where O.D. differences range from 1-1/4" - 12", a Fernco bushing system is available

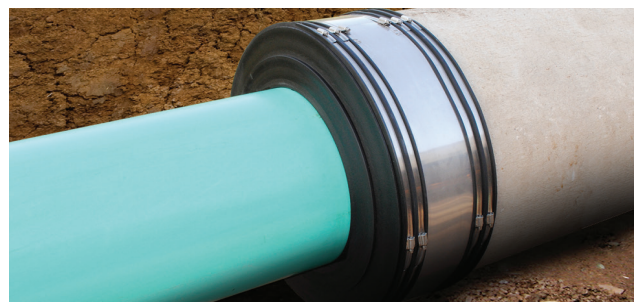


The ideal coupling for repairs, alterations or rehabilitation of large diameter sewer pipe.

# Expanded Range LDC

- Connect pipe materials with O.D.'s up to 12" difference
- Reduces customer cost by utilizing one coupling and bushing configuration
- Reduces multiple couplings and intermediate pipe

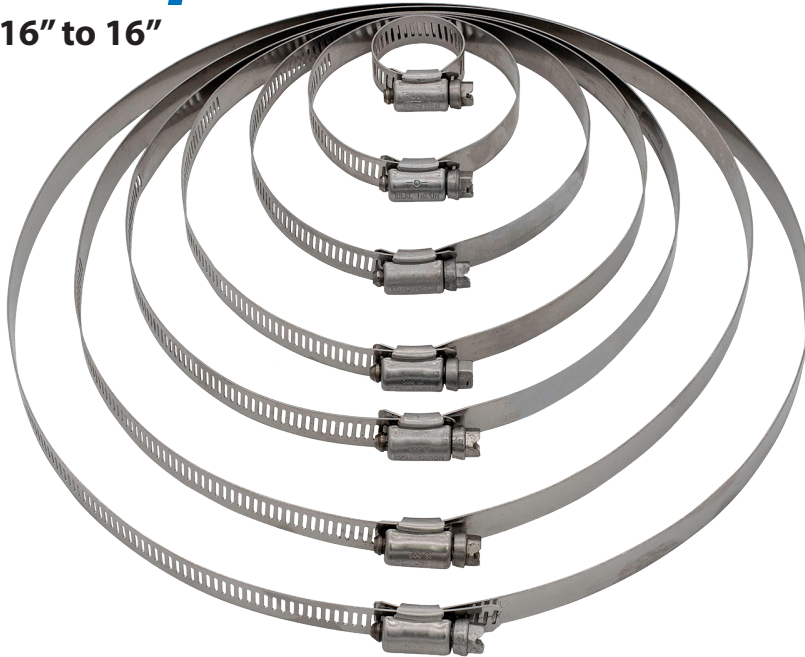
\*Where O.D. differences range from 1-1/4" - 12", a Fernco bushing system is available



**CUSTOM CONNECTIONS** Any size, any material.

# Stainless Steel Clamps

9/16" to 16"



**Series 316 stainless and high torque clamps are available upon request**

Interlocked housing and band design strengthens under tension to ensure a positive seal. Bands have additional slots to accommodate greater dimensional range.

Part Number	For Diameters
012-300	9/16" to 1-1/4"
020-300	3/4" to 1-3/4"
024-300	1-1/16" to 2"
028-300	1-5/16" to 2-1/4"
032-300	1-9/16" to 2-1/2"
038-300	1-15/16" to 2-7/8"
042-300	2-3/16" to 3-1/8"
044-300	2-5/16" to 3-1/4"
064-300	2-5/8" to 4-1/2"
080-300	3-5/8" to 5-1/2"
088-300	4-3/32" to 6"
096-300	4-1/2" to 6-1/2"

Part Number	For Diameters
104-300	5" to 7"
116-300	5-3/4" to 7-3/4"
128-300	6-1/2" to 8-1/2"
140-300	7" to 9-1/4"
152-300	8" to 10"
164-300	8-3/4" to 10-3/4"
184-300	10" to 12"
196-300	10-3/4" to 12-3/4"
212-300	11-3/4" to 13-3/4"
248-300	14" to 16"

Flexible Couplings

# Custom Large Diameter Debris Caps

Custom fabricated for 6.50" and larger pipe OD.



## Technical Data

- Reusable or permanent debris caps for pipe ends
- Designed for direct burial on non-pressurized horizontal pipe lines
- Soil tight seal
- Strong two-piece construction
  - CAP Face: Rigid durable FPVC
  - Cap Body: Flexible PVC
  - Clamps: 300 series stainless steel

*NOTE: Not intended for use as a load bearing surface on vertically orientated pipe. Do not stand or step on cap surface if installed on vertically orientated pipe.*

# Qwik Caps

Quick, reusable caps for pipe ends, testing & cleanouts



Flexible Couplings

*Qwik Caps offer a quick, easy way to cap pipe ends, cleanouts and test pipes. Made of flexible PVC, they are suitable for above-ground or underground applications for most pipe materials.*

### Technical Data

- Underground or above-ground applications
- 300 stainless steel clamps
- Max. operating temperature: 140°F intermittent
- Permanent seal

**Complies with ASTM D5926**

### Nominal Qwik Caps

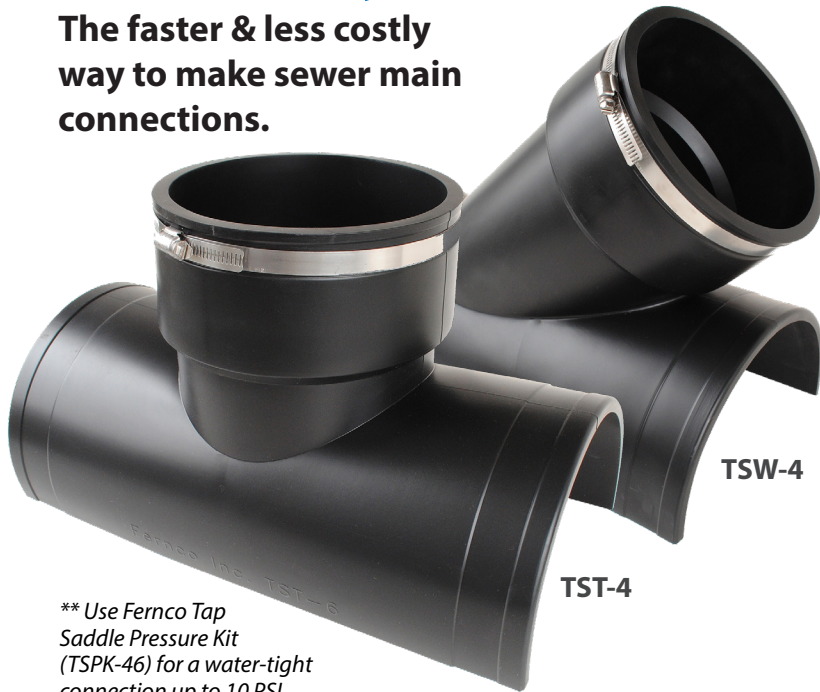
Part Number	I.D.	Min.	Max.
QC-101	1.90	1.75	2.00
QC-102	2.40	2.25	2.60
QC-103	3.50	3.25	3.70
QC-104	4.50	4.25	4.70
QC-105	5.60	5.35	5.80
QC-106	6.60	6.35	6.80
QC-108	8.50	8.25	8.70
QC-110 (TC-10)	10.47	9.88	11.00
QC-112	12.49	11.41	13.33

### Specialty Qwik Caps

Part Number	I.D.	Min.	Max.
QC-0.85	0.85	0.79	0.91
QC-1.07	1.07	1.00	1.12
QC-1.38	1.37	1.22	1.50
QC-1.68	1.68	1.37	1.87
QC-2.75	2.75	2.18	2.93
QC-3.75	3.76	3.29	4.00
QC-4.75	4.82	4.32	5.05
QC-7.00	6.96	6.44	7.25
QC-9.00	9.01	8.59	9.34
QC-9.75	9.75	9.29	10.00
QC-10.75	10.74	10.22	11.15
QC-14.00	14.00	13.23	14.30

# Tee & Wye Tap Saddles

The faster & less costly way to make sewer main connections.



\*\* Use Fernco Tap Saddle Pressure Kit (TSPK-46) for a water-tight connection up to 10 PSI.

Complies with ASTM D5926

## Technical Data

- Includes special 300 series stainless steel 'slip-lock' clamps for easy installation on any type of pipe from 6"-15" \*
- Larger apron w/ locating ring fits 5" or 7" shell cutters
- Large band grooves
- Ensures a soil-tight seal \*\*
- Available for most 4" or 6" plastic or cast iron drain pipe inlets in Tee or Wye configurations

Part Number	Description
TST-4	4" CI or PL Inlet - Tee Tap Saddle
TST-6	6" CI or PL Inlet - Tee Tap Saddle
TSW-4	4" CI or PL Inlet - Wye Tap Saddle
TSW-6	6" CI or PL Inlet - Wye Tap Saddle
* 312-300	Extension Clamps larger than 15" sewer mains

Lateral Connections

# Tap Saddle Pressure Kit



## Technical Data

- Bentonite tape provides a water tight seal
- Pressure tested to 10 PSI
- Stainless steel reinforcing bars apply an even sealing pressure
- Includes two special 300 series stainless steel 'slip-lock' clamps for a fast and simple installation



Part Number	Description
TSPK-46	Pressure kit for Fernco Flexible Tap Saddles - Fits models: TST-4, TST-6, TSW-4, TSW-6



**Connect Service Pipe to solid wall, profile, closed profile and corrugated pipe.**



**Complies with  
ASTM C923**

**Technical Data**

- When tested in concrete manholes
  - Creates water-tight, compression seal up to 10 PSI
  - Withstands up to 7° of deflection
- Easy color identification - gray Sch 40 - green SDR-26 & 35
- Independent of host pipe size, type or material
- Reduced complexity



Part Number	Pipe Inlet	Host Pipe Size Application
QS-4	4" SDR-26 & 35	8" diameter or larger, concrete, clay or solidwall plastic pipe or 8" - 24" corrugated plastic pipe
QS-4S40	4" SCH-40	8" diameter or larger, concrete, clay or solidwall plastic pipe or 8" - 24" corrugated plastic pipe
QS-6	6" SDR-26 & 35	10" diameter or larger, concrete, clay or solidwall plastic pipe or 10" - 24" corrugated plastic pipe
QS-6S40	6" SCH-40	10" diameter or larger, concrete, clay or solidwall plastic pipe or 10" - 24" corrugated plastic pipe
QS-8	8" SDR-26 & 35	15" diameter or larger, concrete, clay or solidwall plastic pipe or 15" - 24" corrugated plastic pipe

NOTE: Not recommended for connection to metal pipe.

Lateral Connections



**Hole Saws  
For Plastic Pipe**

A perfect tool for working through a thick-wall pipe like ribbed PVC or Large Diameter corrugated HDPE.

Part Number	Description
QS-5x4HS	5" OD x 4" Deep Hole Saw with Arbor
QS-7x4HS	7" OD x 4" Deep Hole Saw with Arbor
QS-9x4HS	9" OD x 4" Deep Hole Saw with Arbor



**Coring Bits  
For Concrete or Clay Pipe**

Equipped with straight diamond segments designed for drilling through medium to hard concrete with medium to high reinforcement.

Part Number	Description
QS-5x14CB	5" OD x 14" Length Abrasive Coring Bit
QS-7x14CB	7" OD x 14" Length Abrasive Coring Bit
QS-9x14CB	9" OD x 14" Length Abrasive Coring Bit

# QwikSeal Installation



1. Core a perpendicular hole to the main line:  
 - 5" hole for 4" pipe inlet  
 - 7" hole for 6" pipe inlet  
 - 9" hole for 8" pipe inlet



2. Use sand paper or a file, clean and remove any burrs from opening.



3. Remove band clamp from QwikSeal, fold and insert into opening. Unfold.



4. Pull up on QwikSeal until it stops against the inside of the pipe.



5. Measure the depth of the QwikSeal, from the pipe stop to the top edge.



6. Measure the depth of the fitting to be attached pipe stub. *See alternative method below.*



7. Add the dimensions of the QwikSeal and the fitting and cut a stub to that length.



8. Bevel the leading edge of the pipe stub for easier insertion into the QwikSeal.



9. Lubricate the QwikSeal and pipe stub.



10. Start the pipe stub into the QwikSeal by hand.



11. Using a hammer and block of wood, drive the pipe stub to the QwikSeal pipe stop.



12. Install the band clamp at 60 in-lbs. torque.



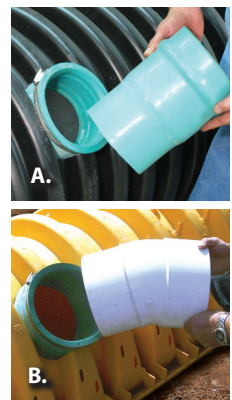
13. Install pipe fitting. Fitting should sit flush with the surface of the QwikSeal.



14. Fitting and QwikSeal should be flush

## Alternative Methods to Stub and Fitting

**Bell End Pipe:** You may also use the bell end of a piece of SDR-35 or SCH 40 instead of the stub and fitting method. After measuring the depth of the QwikSeal in step 5, transfer this measurement to the bell end of your inlet pipe, measuring from the bell. (Figure A) Proceed with steps 8 - 12. **Street Fittings:** Street fittings may also be used with QwikSeal. (Figure B)



Lateral Connections



# ICON Pushfit

Internal Pushfit Connector - 4" & 6" Sewer Pipe and DWV

Internal Seals



Simple, fast pushfit connection



1) Clean and measure pipe I.D.



2) Lubricate gasket O.D. with soap & water solution



3) Push in place up to the pipe stop

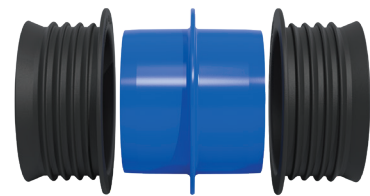
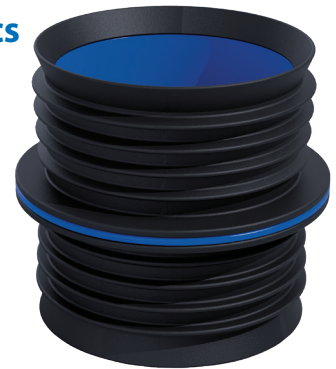
*Ensure that the tapered edge on the rubber sleeve does not fold back when inserting into the pipe.*



4) Lubricate gasket and install 2nd pipe

## Benefits & Characteristics

- No tools required
- Can be removed and re-used
- Watertight connection on any pipe material
- Connects pipes of differing or irregular O.D.
- Rigid ABS Body provides excellent shear resistance
- Ideal for the connection of plastic (SDR 35, Sch 40), Cast Iron and Copper. Does not work for SDR-26.



## Complies with ASTM C 1173

Product Code	Nominal Dia. (inch)	Description
IC44P	4	Connects two pipes having an I.D. range of: 3.90"-4.06"
IC66P	6	Connects two pipes having an I.D. range of: 5.83"-6.02"



# Fernco Donuts

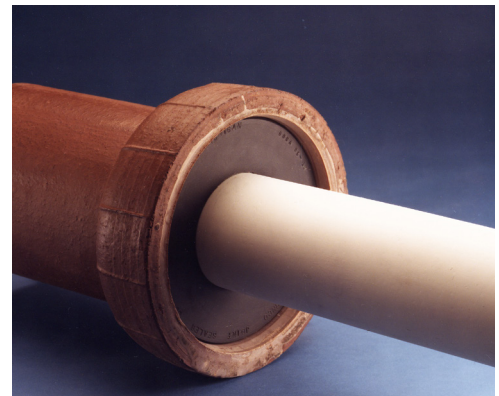
Sewer pipe compression joint seal



Fernco Donuts are flexible PVC donut-shaped rings for the compression sealing of sewer pipe joints and DWV connections such as sockets, hubs, bells and spigots.

Fernco Donuts are available in hundreds of sizes and configurations to use with most brands and types of piping material.

*Give us a call. Our sales associates are trained to assist you in making the right part selection.*



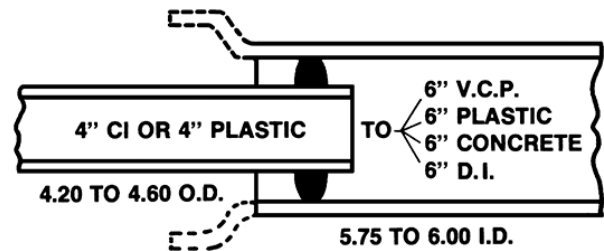
# Fernco O-Rings

Connects 4" house pipe to 6" sewer pipe



O-rings provide a quick, simple solution to create secure connections between most 4" house pipe and 6" sewer pipe.

**Complies with ASTM C443 and C425**



### Technical Data

- Installs quickly and easily
- Connects CI or plastic house pipe to clay, plastic, concrete or Ductile Iron sewer pipe

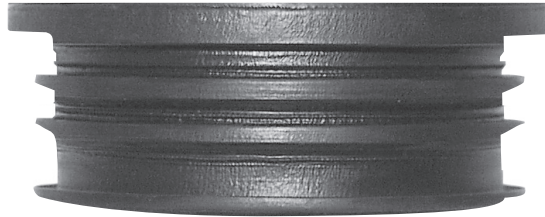
Part Number	Description
BR-64	Rolling style rubber O-Ring

# Multi-Tite Pipe Gaskets

Pipe gasket for service weight cast iron pipe

## Technical Data

- Multi rings on the outside create an easy installation
- Seals sewer pipe joints and connections such as sockets, hubs, bells and spigots



Complies with  
ASTM C564

Part Number	Description
SVG-2	2" service weight cast iron
SVG-3	3" service weight cast iron
SVG-4	4" service weight cast iron
SVG-5	5" service weight cast iron
SVG-6	6" service weight cast iron
SVG-8	8" service weight cast iron
SVG-10	10" service weight cast iron
SVG-12	12" service weight cast iron
SVG-15	15" service weight cast iron

# Concrete Manhole Adapters

Eliminate leaks around pipes entering manhole walls

CMA's are flexible enough to permit lateral pipe movement without destroying seal integrity. It is particularly useful for pipe to which concrete will not adhere, such as plastic pipe.



*\* Due to the factors that can influence the CMA's effectiveness as a seal, Fernco does not warrant this product as a positive seal.*

Part Number	Description
4CMA	4" I.D. Pipe
6CMA	6" I.D. Pipe
8CMA	8" I.D. Pipe
10CMA	10" I.D. Pipe
12CMA	12" I.D. Pipe

# Large Diameter CMA's

For sewer pipes that are 8" and larger

LDCMA's are flexible enough to permit lateral pipe movement without destroying seal integrity. It is particularly useful for pipe to which concrete will not adhere, such as plastic pipe.



Order by specifying the pipe O.D. of the pipe which is to receive the waterstop. Minimum size: 8.5 inches O.D.

*\* Due to the factors that can influence the CMA's effectiveness as a seal, Fernco does not warrant this product as a positive seal.*

# Wax Free Toilet Seal

Residential and commercial applications in three ideal sizes



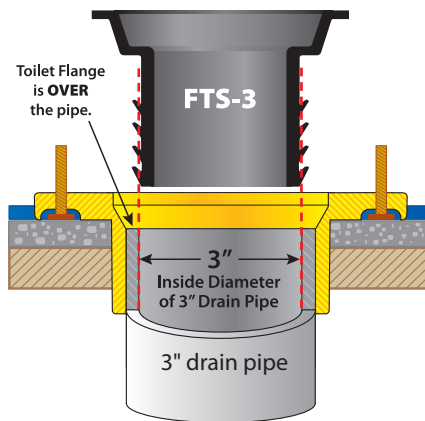
## Technical Data

- Strong and flexible to sustain a seal
- Accommodates floors above the toilet flange to 3/4"
- Impervious to mold and mildew
- Centers itself and the toilet to drain
- Ideal for in-floor radiant heat systems

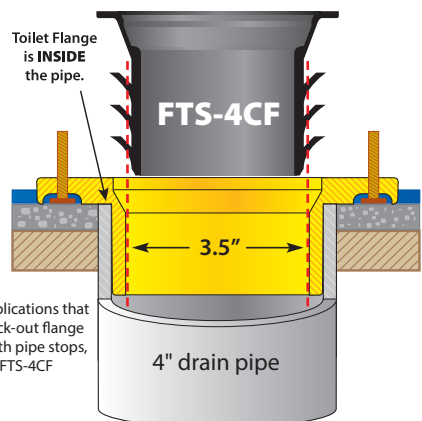
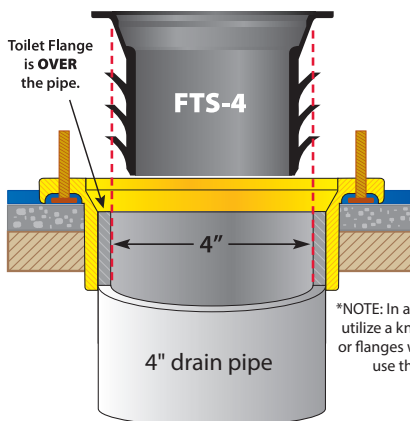
Complies with ASTM A1045 

Part Number	Description
FTS-3	Wax Free Toilet Seal for 3" Drain Pipe
FTS-4	Wax Free Toilet Seal for 4" Drain Pipe
FTS-4CF	Wax Free Toilet Seal for 3.5" Flange and 4" Drain Pipe

The **FTS-3** Wax Free Toilet Seal



The **FTS-4** Wax Free Toilet Seal

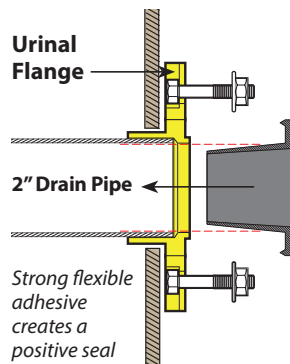


\*NOTE: In applications that utilize a knock-out flange or flanges with pipe stops, use the FTS-4CF

Internal Seals

# Wax Free Urinal Seal

Fast, reliable & leak-free



Strong flexible adhesive creates a positive seal

## Technical Data

- Strong and flexible to sustain a positive seal
- Ideal for new installations and replacements
- Maintains a gas, water and odor tight seal
- Fast, easy installation for a long-term seal
- Impervious to mold and mildew
- Reusable on the same urinal

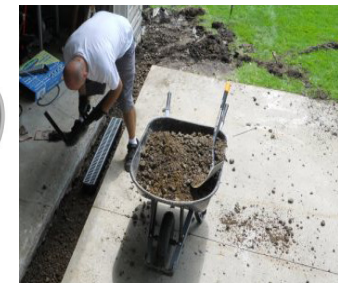
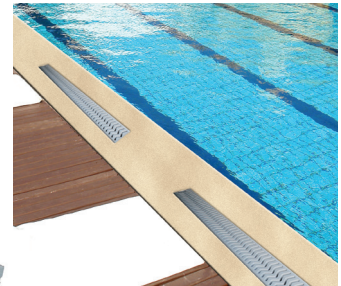
Complies with ASTM A1045 

Part Number	Description
FUS-2	Wax Free Urinal Seal for 2" Drain Pipe

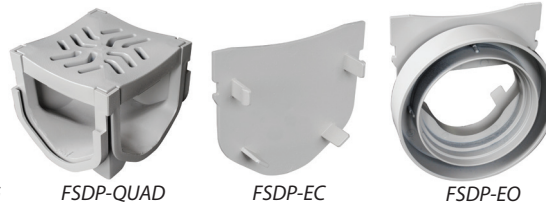


**Ideal for driveways, patios, swimming pools, sports courts, gardens and more!**

StormDrain Plus ensures a long-lasting, permanent solution to the collection and dispersal of standing surface water.



Water Management

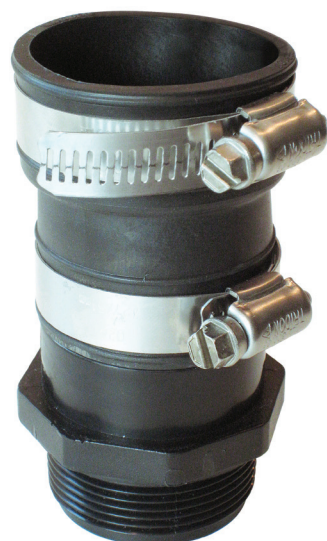


**Complies with ASME A112.6.3, ADA Heel Guard and Class B Loads**

### Technical Data

- Designed to withstand automotive weight for Class B (loads of 61-175 psi), medium-duty pneumatic tire traffic, autos and light trucks at speeds less than 20 mph.
- All products are "UV" inhibited
- Grates are ADA and heel guard compliant
- Grates have a non-slip textured surface
- Clips or screws are not required to assemble
- Concave grates trap and transfer water

Part Number	Description
FSDP-CHGG	39.5" grey Channel with grate
FSDP-GP3G	Three pieces of grey Channel with grate, one End Cap and one End Outlet
FSDP-QUAD	Four-way connector
FSDP-EC	End Cap
FSDP-EO	End Outlet
Replacement Part Number	Description
FSDP-CH	Grey Channel ONLY
FSDP-GG	Grey grate ONLY



# Sump Pump Check Valve

**Reduces sump pump wear and tear**

*Sump Pump Check Valves allow unrestricted water to flow through the pipes.*

### Technical Data

- Full-flow, flapper design
- Eliminates back-flow and wear on pump
- Durable thermoplastic body

Part Number	Description
CV-125T	1-1/4" male pipe thread x 1-1/2" or 1-1/4"
CV-150T	1-1/2" male pipe thread x 1-1/2" or 1-1/4"
CV-150	1-1/4" or 1-1/2" x 1-1/4" or 1-1/2"
CV-200	2" x 2"

# Water Well Debris Traps

**Prevents loose debris from plugging pump suction area**



### Technical Data

- Eliminates debris in the water well pump suction area
- Will not crack or become brittle
- Made of flexible PVC
- Conforms to drilled well irregularities

Part Number	Description
WC500-238	2" casing x 5" well
WC600-350	3" casing x 6" well
WC600-450	4" casing x 6" well
WC700-450	4" casing x 7" well
WC700-562	5" casing x 7" well
WC800-550	5" casing x 8" well
WC900-550	5" casing x 9" well
WC800-662	6" casing x 8" well
WC1000-662	6" casing x 10" well

Water Management

# Downspout Connectors

**Seal out debris by connecting downspouts**

Downspout Connectors stretch easily over most common downspouts to seal out debris. Ideal for aluminum, steel or plastic downspouts and cast iron, spiral, corrugated or plastic drain pipe.



Part Number	Drain Pipe	Downspout
DSC-43	4"	3" x 2" rectangular, 3" round
DSC-33	3"	2-1/2" square
DSC-534	4"	5" x 3" rectangular

Part Number	Description
UDSC-6C	6" Cap for DWV pipe exposed above ground, fitting the O.D. of PVC and CI and a 6" or less downspout
UDSC-6P	6" Plug for DWV pipe cut off at grade level, fitting any 6" I.D. sewer pipe and a 5.75" or less downspout



**15-Minute Repair Kit.**  
**Easy to apply.**  
**No tools needed!**



Pow-R Patch is a complete repair kit that includes a pre-coated fiberglass cloth in a self-contained mixing pouch, and a pair of protective gloves.

**Technical Data**

- Holds up to 100 PSI
- Heat resistant to 425°F

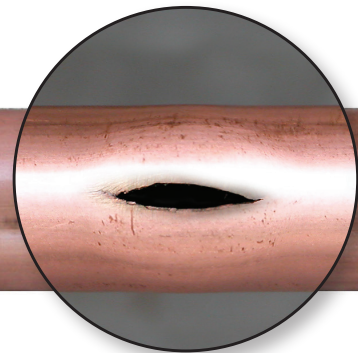
Part Number	Description
FP-P46	4" x 6" fiberglass and epoxy patch



Pow-R Wrap is a water activated fiberglass wrap that permanently repairs wet or dry pipe and hose. Pow-R Wrap is a self-contained kit including everything you need to repair a magnitude of applications.

**Technical Data**

- Water activated
- Fiberglass wrap
- Heat resistant to 425°F
- Conforms to standard water main pressure test
- Cures in 30-60 minutes



**Complies with NSF/ANSI 372** (Powerstick)

Part Number	Description	Pipe Diameter
FPW248CS	2" x 48" wrap	Up to 1"
FPW3132CS	3" x 132" wrap	1-1/4" to 3"
FPW4252CS	4" x 252"	3" to 6"

Sealants



*Pow-R Wrap Industrial with Pow-R Belt is a permanent solution for large diameter pipes from 8"-50".*

**Technical Data**

- Heat resistant to 425°F
- Conforms to standard water main pressure test
- Cures in 60-90 minutes at 55°-75°F
- Safe for drinking water systems
- Repairs up to 1/4" W x 4" L
- Impervious to water, oil, and most chemicals, solvents and acids when cured

FPW8540S-1	1 KIT 8" X 540" Pow-R Wrap				
Pipe Outside Diameter	8"-18"	20"-24"	26"-34"	36"-42"	44"-50"
Number of Kits REQUIRED	1 KITS	2 KITS	3 KITS	4 KITS	5 KITS

# Hose Bibbs

Reusable cap with hose bib for pipe ends and testing DWV systems



### Technical Data

- Permanent or temporary cap
- Convex shape allows the cap to withstand pressure and minimizes ballooning

Part Number	Nominal Pipe Size
HBC-1	1-1/2"
HBC-2	2"
HBC-3	3"
HBC-4	4"
HBC-5	5"
HBC-6	6"

# Flexible Qwik Traps

Replace plastic or metal drain traps

\* 200 Series Stainless Steel  
\* Hand tighten only



Qwik Traps replace 1-1/4" or 1-1/2" plastic or metal drain traps. The PVC material adjusts to the pipes misalignment and installs securely, creating a leak-free connection. To clean, simply squeeze the product!

1-1/4" or cut for  
1-1/2" sink drain

Part Number	Description
FT-150	1-1/4" or 1-1/2" drain trap

# Drain & Trap Connectors

Connect tubular traps to common household drain pipe

\* 200 Series Stainless Steel bands and hand tighten only  
\*\* 300 Series Stainless Steel bands tighten at 60" lbs



Drain & Trap Connectors are ideal for new installations, repairs and alterations. Eliminating traditional methods, this product has a quick installation that will leave drain & trap systems leak-free.



Part Number	Description
DTC-110	1-1/2" pipe x 3/4", 1" plastic or 1" copper **
DTC-150	1-1/2" pipe x 1-1/2" or 1-1/4" tubular traps (use for 2" copper) *
DTC-210	2" pipe x 3/4", 1" plastic or 1" copper **
DTC-215	2" pipe x 1-1/2" or 1-1/4" tubular traps *

Flexible Connectors

# Tubular Drain Pipe Connectors



\* 200 Series  
Stainless Steel.  
Hand tighten only

## Repair or alter tubular drain pipe

Fernco Tubular Drain Pipe Connectors offer a quick solution to extend, alter or repair any combination of 1-1/2" or 1-1/4" brass or plastic drain pipe. Whether connecting brass or plastic, the PVC material is formulated to provide a reliable connection that can be installed in minutes.

Part Number	Description
TC-150	1-1/4" or 1-1/2" tubular drain pipe

# Dishwasher Drain Connector



## Connect dishwasher hoses to sink drain or garbage disposals

Fernco Dishwasher Drain Connector connects a dishwasher hose to sink drains and garbage disposals.

\* 200 Series Stainless Steel. Hand tighten only

Part Number	Description
DWC-100	1/2" x 3/4" dishwasher drain connector

Flexible Connectors

# Shower Drain Connector

## Connect drain pipe to shower drain pipes

Fernco Shower Drain Connectors connect 2" DWV plastic, sch. 40. steel, or XHCI pipe to shower drain bodies.



Part Number	Shower Drain Body
SD-200	American Brass & Aluminum, Armstrong (requires cutting to 3/4" height), Casper Model 101-101P, Casper Model 101 BR, Garvin Model 475, Intercon, Kohler, Schual Mfg. Brass Model 1524
SD-210	Mustee 1-piece molded shower base, Owens Corning 1-piece molded shower base



# Fix-A-Flange

Repair broken toilet flanges



Fix-A-Flange eliminates the need to replace broken toilet flanges. Suitable for cast iron, plastic, copper and brass flanges, Fix-A-Flange offers a long-term solution to stop wobbly and leaky toilets.

Part Number	Description
SF-100	Fix-A-Flange toilet flange repair

# Utility Connectors

Connect small drain lines to DWV plastic sockets



*Fernco Utility Connectors are a one-piece connector with a simple press-fit installation.*

Part Number	Description
UC-1550	1/2" CPVC or copper to 1-1/2" DWV plastic socket
UC-1575	3/4" CPVC or copper to 1-1/2" DWV plastic socket
UC-1510	1" CPVC or copper to 1-1/2" DWV plastic socket

*Note: The Utility Connector is engineered to function in non pressure applications. DO NOT USE in pressure water systems.*

# Hose Grip Washer Connector

Prevent accidental washer hose spills



*The Fernco Hose Grip Washer Connector holds washing machine hoses securely in their standpipe drains.*

Part Number	Description
HG-1	Fits 2" or 1-1/2" standpipe to 1" - 1-7/16" washer hose

Flexible Connectors

\* Insert bushing included.  
Red high torque clamps included.



## 1001 & 5001 Series Couplings *Clay to Clay*

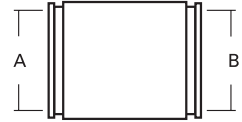
NOMINAL PIPE SIZE (INCHES)	STANDARD RANGE "A" x "B"	1000 RC SERIES RANGE "A" x "B"	5000 RC SERIES RANGE "A" x "B"	ECCENTRIC RANGE "A" x "B"
<b>4 x 4</b>	<b>1001-44</b> 5.55 - 4.85 x 5.55 - 4.85	<b>1001-44RC</b> 5.55 - 4.85 x 5.55 - 4.85	<b>5001-44RC</b> 5.30 - 5.06 x 5.30 - 5.06	
<b>4 x 4 WC</b>	<b>1001-44WC</b> 5.85 - 5.15 x 5.85 - 5.15	<b>1001-44WCRC</b> 5.85 - 5.15 x 5.85 - 5.15	<b>5001-44WCRC</b> 5.60 - 5.36 x 5.60 - 5.36	
<b>5 x 4</b>	<b>use 1002-55</b>			
<b>5 x 5</b>	<b>1001-55</b> 6.35 - 5.65 x 6.35 - 5.65	<b>1001-55RC</b> 6.35 - 5.65 x 6.35 - 5.65		
<b>6 x 4</b>	<b>1001-64*</b> 7.60 - 7.00 x 5.80 - 5.10	<b>1001-64RC*</b> 7.75 - 7.00 x 5.75 - 5.00	<b>5001-64RC</b> 7.50 - 7.03 x 5.50 - 5.03	<b>1001-64EB*</b> 7.75 - 7.00 x 5.25 - 4.90
<b>6 x 4 WC</b>	<b>1001-64WC*</b> 8.25 - 7.50 x 5.65 - 5.05			
<b>6 x 5</b>	<b>use 1002-66</b>			
<b>6 x 6</b>	<b>1001-66</b> 7.75 - 7.00 x 7.75 - 7.05	<b>1001-66RC</b> 7.75 - 7.00 x 7.75 - 7.05	<b>5001-66RC</b> 7.50 - 7.03 x 7.50 - 7.03	
<b>6 x 6 WC</b>	<b>1001-66WC</b> 8.25 - 7.50 x 8.25 - 7.50	<b>1001-66WCRC</b> 8.25 - 7.50 x 8.25 - 7.50	<b>5001-66WCRC</b> 8.00 - 7.53 x 8.00 - 7.53	
<b>8 x 4</b>	<b>1001-84*</b> 10.05 - 9.30 x 5.30 - 4.90			
<b>8 x 6</b>	<b>1001-86*</b> 10.05 - 9.30 x 7.30 - 6.75	<b>1001-86RC*</b> 9.85 - 9.20 x 7.40 - 6.90		<b>1001-86EB*</b> 9.85 - 9.20 x 7.40 - 6.90
<b>8 x 6 WC</b>	<b>1001-86WC</b> 10.20 - 9.55 x 7.85 - 7.20	<b>1001-86WCRC*</b> 10.20 - 9.55 x 7.85 - 7.20		
<b>8 x 8</b>	<b>1001-88</b> 9.85 - 9.20 x 9.85 - 9.10	<b>1001-88RC</b> 9.85 - 9.20 x 9.85 - 9.10	<b>5001-88RC</b> 9.65 - 9.18 x 9.65 - 9.18	
<b>8 x 8 WC</b>	<b>1001-88WC</b> 10.20 - 9.55 x 10.20 - 9.55	<b>1001-88WCRC</b> 10.20 - 9.55 x 10.20 - 9.55	<b>5001-88WCRC</b> 10.00 - 9.53 x 10.00 - 9.53	
<b>10 x 8</b>	<b>1001-10-8*</b> 12.70 - 12.00 x 9.75 - 9.25	<b>1001-10-8RC*</b> 12.70 - 12.00 x 9.80 - 9.25		<b>1001-10-8EB*</b> 12.70 - 12.00 x 9.80 - 9.25
<b>10 x 10</b>	<b>1001-1010</b> 12.70 - 12.00 x 12.70 - 12.00	<b>1001-1010RC</b> 12.70 - 12.00 x 12.70 - 12.00	<b>5001-1010RC</b> 12.50 - 12.03 x 12.50 - 12.03	
<b>10 x 10 WC</b>	<b>use 1001-1010</b>	<b>1001-1010WCRC</b> 12.70 - 12.00 x 12.70 - 12.00	<b>5001-1010WCRC</b> 12.50 - 12.03 x 12.50 - 12.03	
<b>12 x 10</b>	<b>use 1002-1212</b>			
<b>12 x 12</b>	<b>1001-1212</b> 14.70 - 13.75 x 14.70 - 13.75	<b>1001-1212RC</b> 14.70 - 13.75 x 14.70 - 13.75	<b>5001-1212RC</b> 14.50 - 14.03 x 14.50 - 14.03	
<b>12 x 12 WC</b>	<b>use 1004-1212</b>	<b>1001-1212WCRC</b> 15.45 - 14.50 x 15.45 - 14.50	<b>5001-1212WCRC</b> 15.25 - 14.78 x 15.25 - 14.78	
<b>15 x 10</b>	<b>1001-1510*</b> 18.65 - 17.00 x 12.65 - 12.20	<b>1001-1510RC*</b> 18.65 - 17.15 x 12.65 - 12.20		
<b>15 x 12</b>	<b>1001-1512*</b> 18.30 - 17.00 x 14.50 - 13.60	<b>1001-1512RC*</b> 18.65 - 17.00 x 14.45 - 13.90		<b>1001-1512EB*</b> 18.65 - 17.00 x 14.45 - 13.90
<b>15 x 15</b>	<b>1001-1515</b> 18.65 - 17.15 x 18.65 - 17.15	<b>1001-1515RC</b> 18.65 - 17.15 x 18.65 - 17.15	<b>5001-1515RC</b> 18.15 - 17.68 x 18.15 - 17.68	
<b>18 x 18</b>	<b>1001-1818</b> 22.50 - 20.85 x 22.50 - 20.85	<b>1001-1818RC</b> 22.50 - 20.85 x 22.50 - 20.85	<b>5001-1818RC</b> 22.00 - 21.53 x 22.00 - 21.53	
<b>21 x 21</b>	<b>1001-2121</b> 25.25 - 23.00 x 25.25 - 23.00	<b>1001-2121RC</b> 25.25 - 23.00 x 25.25 - 23.00		
<b>24 x 24</b>	<b>1001-2424</b> 29.75 - 27.50 x 29.75 - 27.50	<b>1001-2424RC</b> 29.75 - 27.50 x 29.75 - 27.50		
<b>27 x 27</b>	<b>1001-2727</b> 33.15 - 30.90 x 33.15 - 30.90	<b>1001-2727RC</b> 33.15 - 30.90 x 33.15 - 30.90		

1002 & 5002 Series **Clay to Cast Iron, Plastic or Steel**

NOMINAL PIPE SIZE (INCHES)	STANDARD RANGE "A" x "B"	1000 RC SERIES RANGE "A" x "B"	5000 RC SERIES RANGE "A" x "B"	ECCENTRIC RANGE "A" x "B"
4 x 3	1002-43 5.40 - 4.75 x 3.50 - 3.20	1002-43RC* 5.55 - 4.85 x 3.55 - 3.30	5002-43RC* 5.55 - 4.85 x 3.55 - 3.30	1002-43EB* 5.55 - 4.85 x 3.55 - 3.30
4 x 4	1002-44 5.40 - 4.75 x 4.65 - 4.00	1002-44RC 5.55 - 5.00 x 4.60 - 4.00	5002-44RC 5.40 - 5.16 x 4.50 - 4.26	1002-44EB 5.40 - 4.75 x 4.55 - 3.95
4 x 4 WC	1002-44WC 5.60 - 5.00 x 4.60 - 4.10	1002-44WCRC 5.60 - 5.00 x 4.60 - 4.10	5002-44WCRC* 5.40 - 5.16 x 4.55 - 4.31	
4 x 4 SDR			5002-44SDRRC* 5.40 - 5.16 x 4.30 - 4.06	
4 x 6	1002-46 5.50 - 5.00 x 6.60 - 6.00	1002-46RC* 5.25 - 4.90 x 6.80 - 6.30	5002-46RC* 5.15 - 4.68 x 6.65 - 6.18	1002-46EB* 5.25 - 4.90 x 6.80 - 6.30
5 x 4	1002-54* 6.30 - 5.60 x 4.55 - 3.95	1002-54RC* 6.80 - 6.30 x 4.60 - 4.15		1002-54EB* 6.80 - 6.30 x 4.60 - 4.15
5 x 5	1002-55 6.30 - 5.60 x 5.70 - 5.30	1002-55RC* 6.80 - 6.30 x 5.65 - 5.20	5002-55RC 6.65 - 6.41 x 5.50 - 5.26	1002-55EB* 6.80 - 6.30 x 5.65 - 5.20
6 x 4	1002-64 7.50 - 6.90 x 4.50 - 3.85	1002-64RC* 7.75 - 7.00 x 4.70 - 4.15	5002-64RC* 7.50 - 7.03 x 4.50 - 4.03	1002-64EC 7.85 - 6.90 x 4.69 - 3.95
6 x 4 SDR		1002-64SDRRC* 7.75 - 7.00 x 4.70 - 4.05	5002-64SDRRC* 7.50 - 7.03 x 4.25 - 3.78	
6 x 4 WC	1002-64WC* 8.15 - 7.60 x 4.60 - 4.15	1002-64WCRC* 8.25 - 7.50 x 4.55 - 4.20	5002-64WCRC* 8.00 - 7.53 x 4.50 - 4.03	1002-64WCBE* 8.25 - 7.50 x 4.55 - 4.20
6 x 5	1002-65 7.60 - 7.00 x 5.80 - 5.10	1002-65RC* 7.75 - 7.00 x 5.70 - 5.30		1002-65EB* 7.75 - 7.00 x 5.70 - 5.30
6 x 6	1002-66 7.75 - 7.05 x 6.80 - 6.25	1002-66RC 7.75 - 7.05 x 6.80 - 6.25	5002-66RC 7.50 - 7.05 x 6.65 - 6.25	1002-66EB* 7.75 - 7.05 x 6.80 - 6.25
6 x 6 SDR		1002-66SDRRC* 7.75 - 7.00 x 6.50 - 6.00	5002-66SDRRC* 7.50 - 7.03 x 6.40 - 5.93	
6 x 6 WC	1002-66WC 8.15 - 7.45 x 6.80 - 6.10	1002-66WCRC 8.15 - 8.45 x 6.80 - 7.10	5002-66WCRC 8.00 - 7.53 x 6.65 - 6.18	
8 x 4	1002-84* 9.50 - 8.80 x 4.60 - 4.20	1002-84RC* 9.80 - 9.25 x 4.60 - 4.35		1002-84EB* 9.80 - 9.25 x 4.60 - 4.15
8 x 6	1002-86 9.50 - 8.80 x 6.35 - 5.70	1002-86RC* 9.75 - 9.25 x 6.75 - 6.50	5002-86RC* 9.65 - 9.18 x 6.65 - 6.18	1002-86EB* 9.80 - 9.25 x 6.75 - 6.50
8 x 6 WC	1002-86WC* 10.15 - 9.35 x 6.70 - 6.20	1002-86WCRC* 10.20 - 9.55 x 6.40 - 6.20		
8 x 8	1002-88 9.90 - 9.10 x 8.75 - 7.87	1002-88RC 10.00 - 8.95 x 8.66 - 7.94	5002-88RC 9.75 - 9.28 x 8.60 - 8.13	1002-88EB* 9.75 - 9.25 x 8.85 - 8.30
8 x 8 SDR			5002-88SDRRC* 9.65 - 9.18 x 8.65 - 8.18	
8 x 8 WC	1002-88WC 10.15 - 9.35 x 8.90 - 8.00	1002-88WCRC 9.90 - 9.30 x 8.40 - 8.15	5002-88WCRC 10.00 - 9.53 x 8.65 - 8.18	
10 x 8	1002-10-8* 12.70 - 12.00 x 8.85 - 8.30	1002-10-8RC* 12.70 - 12.00 x 8.85 - 8.30		1002-10-8EB* 12.70 - 12.00 x 8.85 - 8.30
10 x 10	1002-1010 12.70 - 12.00 x 10.75 - 9.75	1002-1010RC* 12.70 - 12.00 x 10.90 - 10.25	5002-1010RC* 12.50 - 12.03 x 10.75 - 10.28	1002-1010EB* 12.70 - 12.00 x 10.75 - 10.25
10 x 10 WC	use 1006-1010	1002-1010WCRC* 12.70 - 12.00 x 11.00 - 10.25	5002-1010WCRC* 12.50 - 12.03 x 10.75 - 10.28	
12 x 10	1002-1210* 14.70 - 13.75 x 11.00 - 10.30	1002-1210RC* 14.70 - 13.75 x 10.75 - 10.15		1002-1210EB* 14.70 - 13.75 x 10.75 - 10.15
12 x 12	1002-1212 14.70 - 13.75 x 12.75 - 11.75	1002-1212RC 14.70 - 13.75 x 12.75 - 11.95	5002-1212RC 14.50 - 14.03 x 12.60 - 12.13	1002-1212EB* 14.70 - 13.75 x 12.75 - 11.95
12 x 12 WC	use 1006-1212	1002-1212WCRC* 15.45 - 14.50 x 12.70 - 11.52	5002-1212WCRC* 15.25 - 14.78 x 12.35 - 11.88	
15 x 10	1002-1510* 18.30 - 17.00 x 10.75 - 10.10	1002-1510RC* 18.65 - 17.00 x 10.75 - 10.10		
15 x 12	1002-1512* 18.30 - 17.00 x 12.70 - 12.10	1002-1512RC* 18.65 - 17.00 x 12.70 - 12.10		1002-1512EB* 18.65 - 17.00 x 12.70 - 12.10
15 x 15	1002-1515 18.30 - 17.00 x 15.60 - 14.30	1002-1515RC* 18.65 - 17.00 x 15.55 - 15.00	5002-1515RC* 18.15 - 17.68 x 15.40 - 14.93	1002-1515EB* 18.65 - 17.00 x 15.55 - 15.00

Resources

\* Insert bushing included.  
Red high torque clamps included.



**1002 & 5002 Series Couplings** *Clay to Cast Iron, Plastic or Steel*

NOMINAL PIPE SIZE (INCHES)	STANDARD RANGE "A" x "B"	1000 RC SERIES RANGE "A" x "B"	5000 RC SERIES RANGE "A" x "B"	ECCENTRIC RANGE "A" x "B"
<b>18 x 18</b>	<b>1002-1818</b> 22.20 - 21.50 x 19.00 - 18.30	<b>1002-1818RC*</b> 22.50 - 20.85 x 18.90 - 18.35	<b>5002-1818RC*</b> 22.00 - 21.53 x 18.80 - 18.33	
<b>21 x 21</b>	<b>1002-2121*</b> 24.80 - 23.30 x 22.40 - 21.80	<b>1002-2121RC*</b> 24.80 - 23.30 x 22.40 - 21.80		
<b>24 x 24</b>	<b>1002-2424*</b> 29.75 - 27.50 x 25.10 - 24.50	<b>1002-2424RC*</b> 29.75 - 27.50 x 25.10 - 24.50		
<b>27 x 27</b>	<b>1002-2727*</b> 32.90 - 31.40 x 28.35 - 27.75	<b>1002-2727RC*</b> 32.90 - 31.40 x 28.35 - 27.75	<b>5002-2727RC*</b> 32.40 - 31.93 x 28.25 - 27.78	

**1003 & 5003 Series Couplings** *Clay to Ductile Iron*

NOMINAL PIPE SIZE (INCHES)	STANDARD RANGE "A" x "B"	1000 RC SERIES RANGE "A" x "B"	5000 RC SERIES RANGE "A" x "B"	ECCENTRIC RANGE "A" x "B"
<b>4 x 4</b>	<b>1003-44</b> 5.45 - 4.90 x 4.90 - 4.40	<b>1003-44RC</b> 5.50 - 4.90 x 5.00 - 4.50	<b>5003-44RC</b> 5.30 - 5.06 x 4.85 - 4.61	
<b>4 x 4 WC</b>	<b>1003-44WC*</b> 5.85 - 5.15 x 5.15 - 4.50	<b>1003-44WCRC*</b> 5.85 - 5.15 x 5.15 - 4.50	<b>5003-44WCRC*</b> 5.60 - 5.36 x 4.95 - 4.71	
<b>4 x 6</b>	<b>use 1051-65</b>	<b>1003-46RC*</b> 5.25 - 4.95 x 7.10 - 6.35		
<b>5 x 4</b>	<b>1003-54*</b> 6.20 - 5.80 x 5.15 - 4.80	<b>1003-54RC*</b> 6.80 - 6.30 x 4.90 - 4.30		
<b>5 x 5</b>	<b>1003-55</b> 6.20 - 5.40 x 6.05 - 5.35			
<b>6 x 4</b>	<b>1003-64</b> 7.60 - 7.00 x 5.80 - 5.10	<b>1003-64RC*</b> 7.75 - 7.00 x 5.20 - 4.70		<b>1003-64EB*</b> 7.75 - 7.00 x 5.20 - 4.70
<b>6 x 4 WC</b>	<b>1003-64WC*</b> 8.25 - 7.50 x 5.10 - 4.65			
<b>6 x 5</b>	<b>1003-65*</b> 7.75 - 7.05 x 7.20 - 6.55			
<b>6 x 6</b>	<b>1003-66</b> 7.45 - 6.75 x 7.05 - 6.45	<b>1003-66RC</b> 7.50 - 6.85 x 6.05 - 6.60	<b>5003-66RC</b> 7.35 - 6.88 x 6.95 - 6.48	
<b>6 x 6 WC</b>	<b>1003-66WC*</b> 8.25 - 7.50 x 7.20 - 6.55	<b>1003-66WCRC</b> 8.25 - 7.50 x 7.20 - 6.55	<b>5003-66WCRC</b> 8.00 - 7.53 x 6.90 - 6.43	
<b>8 x 4</b>	<b>1003-84*</b> 9.90 - 9.10 x 5.05 - 4.60			
<b>8 x 6</b>	<b>1003-86*</b> 9.90 - 9.10 x 7.40 - 6.70	<b>1003-86RC*</b> 9.85 - 9.20 x 7.40 - 6.70		
<b>8 x 6 WC</b>	<b>1003-86WC*</b> 10.15 - 9.35 x 7.50 - 6.70	<b>1003-86WCRC*</b> 10.20 - 9.55 x 7.25 - 6.85		
<b>8 x 8</b>	<b>1003-88</b> 9.75 - 9.10 x 9.25 - 8.60	<b>1003-88RC</b> 9.80 - 9.05 x 9.20 - 8.50	<b>5003-88RC</b> 9.60 - 9.13 x 9.05 - 8.58	
<b>8 x 8 WC</b>	<b>1003-88WC*</b> 10.20 - 9.55 x 9.15 - 8.35	<b>1003-88WCRC*</b> 10.20 - 9.55 x 9.15 - 8.35		
<b>10 x 8</b>	<b>1003-10-8*</b> 12.70 - 12.00 x 9.15 - 8.60	<b>1003-10-8RC*</b> 12.70 - 12.00 x 9.20 - 8.85		<b>1003-10-8EB*</b> 12.70 - 12.00 x 9.20 - 8.85
<b>10 x 10</b>	<b>1003-1010*</b> 12.70 - 12.00 x 11.30 - 10.45	<b>1003-1010RC*</b> 12.70 - 12.00 x 11.30 - 10.45	<b>5003-1010RC*</b> 12.50 - 12.03 x 11.10 - 10.63	
<b>10 x 10 WC</b>	<b>1003-1010WC*</b> 12.70 - 12.00 x 11.30 - 10.45	<b>1003-1010WCRC*</b> 12.70 - 12.00 x 11.30 - 10.45	<b>5003-1010WCRC*</b> 12.50 - 12.03 x 11.10 - 10.63	
<b>12 x 10</b>	<b>1003-1210*</b> 14.70 - 13.75 x 11.30 - 10.45	<b>1003-1210RC*</b> 14.70 - 13.75 x 11.30 - 10.45		
<b>12 x 12</b>	<b>1003-1212</b> 15.00 - 14.00 x 13.50 - 12.60	<b>1003-1212RC*</b> 14.70 - 13.75 x 13.40 - 12.50	<b>5003-1212RC*</b> 14.50 - 14.03 x 13.20 - 12.73	

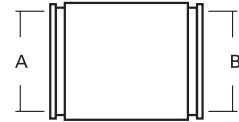
## 1003 & 5003 Series Couplings *Clay to Ductile Iron*

NOMINAL PIPE SIZE (INCHES)	STANDARD RANGE "A" x "B"	1000 RC SERIES RANGE "A" x "B"	5000 RC SERIES RANGE "A" x "B"	ECCENTRIC RANGE "A" x "B"
12 x 12 WC	<b>1003-1212WC*</b> 15.45 - 14.50 x 13.50 - 12.50	<b>1003-1212WCRC*</b> 15.45 - 14.50 x 13.50 - 12.50		
15 x 10	<b>1003-1510*</b> 18.30 - 17.00 x 11.25 - 10.60	<b>1003-1510RC*</b> 18.65 - 17.00 x 11.30 - 10.85		<b>1003-1510EB*</b> 18.65 - 17.00 x 11.30 - 10.85
15 x 12	<b>1003-1512*</b> 18.30 - 17.00 x 13.50 - 12.50	<b>1003-1512RC*</b> 18.65 - 17.00 x 13.40 - 13.00		<b>1003-1512EB*</b> 18.65 - 17.00 x 13.40 - 13.00
15 x 15	<b>1003-1515*</b> 18.65 - 17.00 x 16.75 - 16.10	<b>1003-1515RC*</b> 18.65 - 17.00 x 16.75 - 16.10		
15 x 16	<b>1003-1516</b> 18.65 - 17.15 x 18.65 - 17.15	<b>1003-1516RC</b> 18.65 - 17.15 x 18.65 - 17.15	<b>5003-1516RC</b> 17.50 - 17.03 x 17.50 - 17.03	
18 x 18	<b>1003-1818*</b> 22.50 - 20.85 x 20.00 - 18.50	<b>1003-1818RC*</b> 22.50 - 20.85 x 20.00 - 18.50		
24 x 24	<b>1003-2424*</b> 29.75 - 27.50 x 26.30 - 24.80	<b>1003-2424RC*</b> 29.75 - 27.50 x 26.30 - 24.80		

## 1004 & 5004 Series Couplings *Concrete to Concrete*

NOMINAL PIPE SIZE (INCHES)	STANDARD RANGE "A" x "B"	1000 RC SERIES RANGE "A" x "B"	5000 RC SERIES RANGE "A" x "B"	ECCENTRIC RANGE "A" x "B"
4 x 4	<b>1004-44</b> 5.85 - 5.15 x 5.85 - 5.15	<b>1004-44RC</b> 5.85 - 5.15 x 5.85 - 5.15	<b>5004-44RC</b> 5.60 - 5.36 x 5.60 - 5.36	
6 x 4	<b>1004-64*</b> 8.00 - 7.30 x 5.80 - 5.10			
6 x 6	<b>1004-66</b> 7.90 - 7.30 x 7.90 - 7.30	<b>1004-66RC</b> 7.90 - 7.30 x 7.90 - 7.30	<b>5004-66RC</b> 7.65 - 7.18 x 7.65 - 7.18	
8 x 6	<b>1004-86*</b> 10.50 - 9.75 x 7.90 - 7.20			
8 x 8	<b>1004-88</b> 10.65 - 9.90 x 10.65 - 9.90	<b>1004-88RC</b> 10.65 - 9.90 x 10.65 - 9.90	<b>5004-88RC</b> 10.40 - 9.93 x 10.40 - 9.93	
10 x 8	<b>use 1056-1210</b>			
10 x 10	<b>use 1001-1010</b>			
10 x 10	<b>1004-1010LC</b> 14.50 - 13.00 x 14.50 - 13.00	<b>1004-1010RC</b> 12.70 - 12.00 x 12.70 - 12.00	<b>5004-1010RC</b> 12.50 - 12.03 x 12.50 - 12.03	
10 x 10	<b>1004-1010LCRC</b> 14.50 - 13.00 x 14.50 - 13.00			
12 x 10	<b>1004-1210*</b> 15.45 - 14.50 x 12.65 - 11.70			<b>1004-1210EB*</b> 15.45 - 14.50 x 12.65 - 11.70
12 x 12	<b>1004-1212</b> 15.45 - 14.50 x 15.45 - 14.50	<b>1004-1212RC</b> 15.45 - 14.50 x 15.45 - 14.50	<b>5004-1212RC</b> 15.25 - 14.78 x 15.25 - 14.78	
12 x 12 LC	<b>1004-1212LC</b> 16.00 - 15.10 x 16.00 - 15.10	<b>1004-1212LCRC</b> 16.00 - 15.10 x 16.00 - 15.10	<b>5004-1212LCRC</b> 15.80 - 15.33 x 15.80 - 15.33	
15 x 15	<b>1004-1515</b> 20.20 - 18.90 x 20.20 - 18.90	<b>1004-1515RC</b> 20.20 - 18.90 x 20.20 - 18.90		
18 x 18	<b>1004-1818</b> 22.50 - 21.00 x 22.50 - 21.00	<b>1004-1818RC</b> 22.50 - 21.00 x 22.50 - 21.00		
21 x 21	<b>1004-2121</b> 26.60 - 25.10 x 26.60 - 25.10	<b>1004-2121RC</b> 26.60 - 25.10 x 26.60 - 25.10		
24 x 24	<b>1004-2424</b> 30.50 - 29.00 x 30.50 - 29.00	<b>1004-2424RC</b> 30.50 - 29.00 x 30.50 - 29.00		
27 x 27	<b>1004-2727</b> 33.90 - 32.00 x 33.90 - 32.00	<b>1004-2727RC</b> 33.90 - 32.00 x 33.90 - 32.00		

\* Insert bushing included.  
Red high torque clamps included.



## 1005 Series Couplings *Concrete to Clay*

NOMINAL PIPE SIZE (INCHES)	STANDARD RANGE "A" x "B"	1000 RC SERIES RANGE "A" x "B"	5000 RC SERIES RANGE "A" x "B"	ECCENTRIC RANGE "A" x "B"
4 x 4	<b>1005-44*</b> 5.85 - 5.15 x 5.15 - 4.50	<b>1005-44RC*</b> 5.85 - 5.15 x 5.15 - 4.50		
6 x 4	<b>1005-64*</b> 7.90 - 7.30 x 5.10 - 4.65			<b>1005-64EB*</b> 7.90 - 7.30 x 5.10 - 4.65
6 x 6	<b>1005-66*</b> 7.90 - 7.30 x 7.35 - 6.75			
8 x 6	<b>1005-86*</b> 10.65 - 9.90 x 7.25 - 6.85			
8 x 8	<b>1005-88*</b> 10.65 - 9.90 x 9.80 - 9.15	<b>1005-88RC*</b> 10.65 - 9.90 x 9.80 - 9.15		
10 x 10	<b>use 1001-1010</b>			
12 x 10	<b>1005-1210*</b> 15.45 - 14.50 x 12.65 - 11.70			<b>1005-1210EB*</b> 15.45 - 14.50 x 12.65 - 11.70
12 x 12	<b>1005-1212*</b> 15.45 - 14.50 x 14.50 - 13.60			
15 x 15	<b>1005-1515*</b> 20.20 - 18.90 x 17.55 - 17.30	<b>1005-1515RC*</b> 20.20 - 18.90 x 17.55 - 17.30		

## 1006 & 5006 Series Couplings *Concrete to Cast Iron, Plastic, or Steel*

NOMINAL PIPE SIZE (INCHES)	STANDARD RANGE "A" x "B"	1000 RC SERIES RANGE "A" x "B"	5000 RC SERIES RANGE "A" x "B"	ECCENTRIC RANGE "A" x "B"
4 x 4	<b>1006-44</b> 5.75 - 5.25 x 4.50 - 4.00	<b>1006-44RC</b> 5.80 - 5.25 x 4.60 - 4.30	<b>5006-44RC</b> 5.90 - 5.66 x 4.50 - 4.26	<b>1006-44EB*</b> 5.85 - 5.40 x 4.60 - 4.05
4 x 4 SDR			<b>5006-44SDRRC*</b> 5.90 - 5.66 x 4.35 - 4.11	
4 x 4 LC	<b>1006-44LC</b> 6.10 - 5.60 x 4.70 - 4.20	<b>1006-44LCRC</b> 6.10 - 5.60 x 4.70 - 4.20	<b>5006-44LCRC</b> 5.90 - 5.43 x 4.50 - 4.03	
5 x 4	<b>use 1051-54</b>			
6 x 4	<b>1006-64</b> 7.95 - 7.25 x 4.50 - 4.00	<b>1006-64RC*</b> 7.90 - 7.30 x 4.60 - 4.15	<b>5006-64RC*</b> 7.65 - 7.18 x 4.50 - 4.03	<b>1006-64EB*</b> 7.90 - 7.30 x 4.60 - 4.15
6 x 4			<b>5006-64SDRRC*</b> 7.50 - 7.03 x 4.35 - 3.88	
6 x 5	<b>1006-65*</b> 8.00 - 7.30 x 5.60 - 5.10			<b>1006-65EB*</b> 7.90 - 7.30 x 5.80 - 5.20
6 x 6	<b>1006-66</b> 8.00 - 7.30 x 6.70 - 6.00	<b>1006-66RC</b> 7.65 - 7.05 x 6.60 - 6.40	<b>5006-66RC</b> 7.55 - 7.08 x 6.50 - 6.03	<b>1006-66EB*</b> 7.90 - 7.30 x 6.75 - 6.50
6 x 6 LC		<b>1006-66LCRC</b> 7.90 - 7.30 x 6.55 - 6.30	<b>5006-66LCRC</b> 8.00 - 7.53 x 6.65 - 6.18	
8 x 4	<b>1006-84*</b> 10.50 - 9.75 x 4.60 - 4.15			<b>1006-84EB*</b> 10.65 - 9.90 x 4.55 - 4.40
8 x 6	<b>1006-86*</b> 10.50 - 9.75 x 6.75 - 6.50	<b>1006-86RC*</b> 10.65 - 9.90 x 6.75 - 6.50	<b>5006-86RC*</b> 10.40 - 9.93 x 6.25 - 5.78	<b>1006-86EB*</b> 10.65 - 9.90 x 6.75 - 6.50
8 x 8	<b>1006-88</b> 10.50 - 9.75 x 8.70 - 7.95	<b>1006-88RC</b> 10.75 - 9.90 x 8.75 - 8.50	<b>5006-88RC</b> 10.50 - 10.03 x 8.65 - 8.18	<b>1006-88EB*</b> 10.65 - 9.90 x 8.85 - 8.30
8 x 8 LC	<b>1006-88LC*</b> 12.75 - 11.85 x 8.85 - 8.30			
10 x 8	<b>1006-10-8*</b> 12.75 - 11.85 x 8.85 - 8.30			<b>1006-10-8EB*</b> 12.70 - 12.00 x 8.85 - 8.30
10 x 10	<b>1006-1010</b> 12.85 - 12.00 x 10.75 - 9.85	<b>1006-1010RC*</b> 12.70 - 12.00 x 11.00 - 10.25	<b>5006-1010RC*</b> 12.50 - 12.03 x 10.75 - 10.28	

## 1006 & 5006 Series Couplings *Concrete to Cast Iron, Plastic, or Steel*

NOMINAL PIPE SIZE (INCHES)	STANDARD RANGE "A" x "B"	1000 RC SERIES RANGE "A" x "B"	5000 RC SERIES RANGE "A" x "B"	ECCENTRIC RANGE "A" x "B"
<b>10 x 10 LC</b>	<b>1006-1010LC*</b> 14.50 - 13.53 x 10.75 - 10.13	<b>1006-1010LCRC*</b> 14.50 - 13.53 x 10.75 - 10.13	<b>5006-1010LCRC*</b> 14.00 - 13.53 x 10.60 - 10.13	
<b>12 x 10</b>	<b>1006-1210*</b> 16.50 - 15.50 x 11.00 - 10.25	<b>1006-1210RC*</b> 15.45 - 14.50 x 10.75 - 10.30	<b>5006-1210RC*</b> 15.25 - 14.78 x 10.60 - 10.13	<b>1006-1210EB*</b> 15.45 - 14.50 x 10.75 - 10.10
<b>12 x 10</b>	<b>1006-1210LC*</b> 16.00 - 15.10 x 10.75 - 10.30			
<b>12 x 12</b>	<b>1006-1212</b> 16.50 - 15.50 x 12.60 - 11.75	<b>1006-1212RC*</b> 15.45 - 14.50 x 12.65 - 11.70	<b>5006-1212RC*</b> 15.25 - 14.78 x 12.35 - 11.88	<b>1006-1212EB*</b> 15.45 - 14.50 x 12.65 - 11.70
<b>12 x 12 LC</b>	<b>1006-1212LC*</b> 16.00 - 15.10 x 12.65 - 12.25	<b>1006-1212LCRC*</b> 16.00 - 15.10 x 12.65 - 12.25	<b>5006-1212LCRC*</b> 15.80 - 15.33 x 12.45 - 11.98	<b>1006-1212LCRB*</b> 16.00 - 15.10 x 12.65 - 12.25
<b>15 x 10</b>	<b>1006-1510*</b> 20.25 - 18.75 x 10.75 - 10.10	<b>1006-1510RC*</b> 20.20 - 18.90 x 10.75 - 10.30		
<b>15 x 12</b>	<b>1006-1512*</b> 20.25 - 18.75 x 12.65 - 11.70	<b>1006-1512RC*</b> 20.20 - 18.90 x 12.65 - 12.25		<b>1006-1512EB*</b> 20.20 - 18.90 x 12.65 - 12.25
<b>15 x 15</b>	<b>1006-1515</b> 20.25 - 18.75 x 16.00 - 14.75	<b>1006-1515RC</b> 20.20 - 18.90 x 15.40 - 15.15	<b>5006-1515RC*</b> 19.70 - 19.23 x 15.25 - 14.78	
<b>18 x 18</b>	<b>1006-1818*</b> 22.50 - 21.00 x 20.00 - 18.50	<b>1006-1818RC*</b> 22.50 - 21.00 x 20.00 - 18.50	<b>5006-1818RC*</b> 22.00 - 21.53 x 19.50 - 19.03	
<b>21 x 21</b>	<b>1006-2121*</b> 26.60 - 25.10 x 22.50 - 21.80	<b>1006-2121RC*</b> 26.60 - 25.10 x 22.50 - 21.80		
<b>24 x 24</b>	<b>1006-2424*</b> 30.50 - 29.00 x 25.50 - 24.00	<b>1006-2424RC*</b> 30.50 - 29.00 x 25.50 - 24.00		
<b>27 x 27</b>	<b>1006-2727*</b> 33.90 - 32.00 x 28.25 - 27.50	<b>1006-2727RC*</b> 33.90 - 32.00 x 28.25 - 27.50		

## 1051 & 5051 Series Couplings *Ductile Iron to Cast Iron, Plastic, or Steel*

NOMINAL PIPE SIZE (INCHES)	STANDARD RANGE "A" x "B"	1000 RC SERIES RANGE "A" x "B"	5000 RC SERIES RANGE "A" x "B"	ECCENTRIC RANGE "A" x "B"
<b>4 x 4</b>	<b>1051-44</b> 5.00 - 4.35 x 4.60 - 4.00	<b>1051-44RC</b> 5.00 - 4.40 x 4.50 - 4.00	<b>5051-44RC</b> 4.85 - 4.61 x 4.40 - 4.16	<b>1051-44EB*</b> 4.90 - 4.50 x 4.50 - 4.00
<b>4 x 5</b>	<b>1051-45*</b> 5.15 - 4.50 x 5.70 - 5.20	<b>1051-45RC*</b> 5.15 - 4.50 x 5.70 - 5.20		
<b>4 x 6</b>	<b>1051-46*</b> 4.90 - 4.30 x 6.80 - 6.30	<b>1051-46RC*</b> 4.90 - 4.30 x 6.80 - 6.30	<b>5051-46RC*</b> 6.65 - 6.18 x 4.75 - 4.28	<b>1051-46EB*</b> 5.05 - 4.75 x 6.80 - 6.30
<b>5 x 4</b>	<b>1051-54</b> 5.95 - 5.25 x 4.75 - 4.00			<b>1051-54EB*</b> 6.15 - 5.50 x 4.55 - 3.95
<b>5 x 5</b>	<b>1051-55*</b> 6.30 - 5.60 x 5.70 - 5.25	<b>1051-55RC*</b> 6.15 - 5.50 x 5.50 - 5.20		
<b>6 x 4</b>	<b>1051-64*</b> 7.10 - 6.45 x 4.50 - 4.00	<b>1051-64RC*</b> 7.10 - 6.35 x 4.60 - 4.15	<b>5051-64RC*</b> 6.95 - 6.48 x 4.60 - 4.15	<b>1051-64EB*</b> 6.80 - 6.30 x 4.60 - 4.15
<b>6 x 5</b>	<b>1051-65*</b> 7.00 - 6.35 x 5.35 - 4.70	<b>1051-65RC*</b> 7.10 - 6.35 x 5.70 - 5.20		<b>1051-65EB*</b> 6.80 - 6.30 x 5.70 - 5.20
<b>6 x 6</b>	<b>1051-66</b> 7.00 - 6.35 x 6.60 - 6.00	<b>1051-66RC</b> 7.20 - 6.50 x 6.90 - 6.20	<b>5051-66RC</b> 7.00 - 6.53 x 6.70 - 6.23	
<b>8 x 4</b>	<b>1051-84*</b> 9.25 - 8.60 x 4.60 - 4.15	<b>1051-84RC*</b> 9.25 - 8.55 x 4.70 - 4.40	<b>5051-84RC*</b> 9.05 - 8.58 x 4.55 - 4.08	<b>1051-84EB*</b> 9.25 - 8.80 x 4.60 - 4.15
<b>8 x 6</b>	<b>1051-86*</b> 9.25 - 8.60 x 6.75 - 6.50	<b>1051-86RC*</b> 9.25 - 8.55 x 6.75 - 6.50		<b>1051-86EB*</b> 9.25 - 8.55 x 6.75 - 6.50
<b>8 x 8</b>	<b>1051-88</b> 9.25 - 8.60 x 8.70 - 8.00	<b>1051-88RC</b> 9.40 - 8.75 x 8.65 - 7.95	<b>5051-88RC</b> 9.25 - 8.78 x 8.45 - 7.98	
<b>10 x 8</b>	<b>1051-10-8*</b> 11.15 - 10.25 x 8.85 - 8.30	<b>1051-10-8RC*</b> 10.95 - 10.05 x 8.85 - 8.30		
<b>10 x 10</b>	<b>1051-1010</b> 11.15 - 10.25 x 10.75 - 9.90	<b>1051-1010RC</b> 10.95 - 10.05 x 10.70 - 9.80	<b>5051-1010RC</b> 10.75 - 10.28 x 10.50 - 10.03	
<b>12x 10</b>	<b>1051-1210*</b> 13.20 - 12.25 x 11.00 - 10.25	<b>1051-1210RC*</b> 13.30 - 12.55 x 10.85 - 10.15		<b>1051-1210EB*</b> 13.30 - 12.55 x 10.85 - 10.15

**1051 & 5051  
Series Couplings**

**Ductile Iron to Cast Iron, Plastic, or Steel**

NOMINAL PIPE SIZE (INCHES)	STANDARD RANGE "A" x "B"	1000 RC SERIES RANGE "A" x "B"	5000 RC SERIES RANGE "A" x "B"	ECCENTRIC RANGE "A" x "B"
<b>12 x 12</b>	<b>1051-1212</b> 13.20 - 12.25 x 12.60 - 11.75	<b>1051-1212RC*</b> 13.30 - 12.55 x 12.70 - 11.60	<b>5051-1212RC*</b> 13.05 - 12.58 x 12.35 - 11.88	
<b>12 x 15</b>	<b>1051-1215*</b> 13.50 - 12.50 x 15.75 - 14.50	<b>1051-1215RC*</b> 13.50 - 12.50 x 15.75 - 14.50	<b>5051-1215RC*</b> 13.20 - 12.73 x 15.40 - 14.93	
<b>15 x 10</b>	<b>1051-1510*</b> 16.00 - 14.90 x 10.75 - 10.30			<b>1051-1510EB*</b> 16.00 - 14.90 x 10.75 - 10.30
<b>15 x 12</b>	<b>1051-1512*</b> 16.00 - 14.90 x 12.65 - 12.25			
<b>15 x 15</b>	<b>1051-1515</b> 16.00 - 14.90 x 16.00 - 14.90	<b>1051-1515RC*</b> 16.00 - 14.90 x 16.00 - 14.90		
<b>18 x 18</b>	<b>1051-1818*</b> 20.10 - 19.00 x 19.00 - 18.00	<b>1051-1818RC*</b> 20.10 - 19.00 x 19.00 - 18.00		
<b>24 x 24</b>	<b>1051-2424*</b> 26.30 - 24.30 x 25.30 - 23.30	<b>1051-2424RC*</b> 26.30 - 24.30 x 25.30 - 23.30		

**1055 & 5055  
Series Couplings**

**Ductile Iron to Ductile Iron**

NOMINAL PIPE SIZE (INCHES)	STANDARD RANGE "A" x "B"	1000 RC SERIES RANGE "A" x "B"	5000 RC SERIES RANGE "A" x "B"	ECCENTRIC RANGE "A" x "B"
<b>4 x 4</b>	<b>1055-44</b> 4.90 - 4.50 x 4.90 - 4.50	<b>1055-44RC</b> 4.90 - 4.50 x 4.90 - 4.50	<b>5055-44RC</b> 4.75 - 4.28 x 4.75 - 4.28	
<b>5 x 4</b>	<b>1055-54*</b> 6.30 - 5.60 x 5.15 - 4.50			
<b>5 x 5</b>	<b>1055-55</b> 6.20 - 5.40 x 6.05 - 5.35			
<b>6 x 4</b>	<b>1055-64</b> 7.00 - 6.15 x 4.90 - 4.30	<b>1055-64RC*</b> 7.10 - 6.35 x 5.10 - 4.80		<b>1055-64EB*</b> 7.10 - 6.35 x 5.10 - 4.80
<b>6 x 5</b>	<b>1055-65</b> 6.95 - 6.20 x 5.90 - 5.30			<b>1055-65EB*</b> 7.10 - 6.35 x 6.10 - 5.60
<b>6 x 6</b>	<b>1055-66</b> 7.10 - 6.35 x 7.10 - 6.35	<b>1055-66RC</b> 7.10 - 6.35 x 7.10 - 6.35	<b>5055-66RC</b> 6.95 - 6.48 x 6.95 - 6.48	
<b>8 x 4</b>	<b>1055-84*</b> 9.25 - 8.60 x 5.05 - 4.60			<b>1055-84EB*</b> 9.25 - 8.55 x 5.15 - 4.75
<b>8 x 6</b>	<b>1055-86*</b> 9.25 - 8.60 x 6.90 - 6.25	<b>1055-86RC*</b> 9.25 - 8.55 x 6.85 - 6.50	<b>5055-86RC*</b> 9.10 - 8.63 x 6.70 - 6.23	<b>1055-86EB*</b> 9.25 - 8.55 x 6.85 - 6.50
<b>8 x 8</b>	<b>1055-88</b> 9.25 - 8.55 x 9.25 - 8.55	<b>1055-88RC</b> 9.25 - 8.55 x 9.25 - 8.55	<b>5055-88RC</b> 9.05 - 8.58 x 9.05 - 8.58	
<b>10 x 8</b>	<b>1055-10-8*</b> 11.15 - 10.25 x 9.15 - 8.60			<b>1055-10-8EB*</b> 10.95 - 10.25 x 9.15 - 8.60
<b>10 x 10</b>	<b>1055-1010</b> 10.95 - 10.25 x 10.95 - 10.25	<b>1055-1010RC</b> 10.95 - 10.25 x 10.95 - 10.25	<b>5055-1010RC</b> 10.75 - 10.28 x 10.75 - 10.28	
<b>12 x 8</b>	<b>1055-12-8*</b> 13.20 - 12.25 x 9.20 - 8.85			
<b>12 x 10</b>	<b>1055-1210*</b> 13.20 - 12.25 x 11.30 - 10.45	<b>1055-1210RC*</b> 13.30 - 12.55 x 11.35 - 10.65		<b>1055-1210EB*</b> 13.30 - 12.55 x 11.35 - 10.65
<b>12 x 12</b>	<b>1055-1212</b> 13.30 - 12.55 x 13.30 - 12.55	<b>1055-1212RC</b> 13.30 - 12.55 x 13.30 - 12.55	<b>5055-1212RC</b> 13.05 - 12.58 x 13.05 - 12.58	
<b>15 x 10</b>	<b>1055-1510*</b> 16.60 - 15.35 x 11.30 - 10.85			
<b>15 x 12</b>	<b>1055-1512*</b> 16.60 - 15.35 x 13.25 - 12.70	<b>1055-1512RC*</b> 16.60 - 15.35 x 13.40 - 13.00		<b>1055-1512EB*</b> 16.60 - 15.35 x 13.40 - 13.00
<b>15 x 15</b>	<b>1055-1515</b> 16.60 - 15.35 x 16.60 - 15.35	<b>1055-1515RC</b> 16.60 - 15.35 x 16.60 - 15.35		
<b>18 x 18</b>	<b>1055-1818</b> 20.20 - 18.70 x 20.20 - 18.70	<b>1055-1818RC</b> 20.20 - 18.70 x 20.20 - 18.70		
<b>24 x 24</b>	<b>1055-2424</b> 26.30 - 24.30 x 26.30 - 24.30	<b>1055-2424RC</b> 26.30 - 24.30 x 26.30 - 24.30		



1056 & 5056  
Series Couplings

## Cast Iron, Plastic, Steel to Cast Iron, Plastic, Steel

NOMINAL PIPE SIZE (INCHES)	STANDARD RANGE "A" x "B"	1000 RC SERIES RANGE "A" x "B"	5000 RC SERIES RANGE "A" x "B"	ECCENTRIC RANGE "A" x "B"
<b>0.75 x 0.75</b>	<b>1056-075</b> 1.10 - 0.80 x 1.10 - 0.80			
<b>1 x 1</b>	<b>1056-100</b> 1.35 - 1.05 x 1.35 - 1.05			
<b>1.25 x 1.25</b>	<b>1056-125</b> 1.70 - 1.40 x 1.70 - 1.40			
<b>1.50 x 1.25</b>	<b>1056-150/125</b> 2.05 - 1.70 x 1.70 - 1.40			
<b>1.50 x 1.50</b>	<b>1056-150</b> 2.00 - 1.65 x 2.00 - 1.65	<b>1056-150RC</b> 2.00 - 1.65 x 2.00 - 1.65		
<b>2 x 1.50</b>	<b>1056-215</b> 2.50 - 2.15 x 1.95 - 1.70	<b>1056-215RC*</b> 2.50 - 2.15 x 1.95 - 1.80		
<b>2 x 2</b>	<b>1056-22</b> 2.50 - 2.15 x 2.50 - 2.15	<b>1056-22RC</b> 2.50 - 2.15 x 2.50 - 2.15		
<b>2.50 x 1.25</b>	<b>1056-250/125</b> 3.10 - 2.50 x 1.75 - 1.40	<b>1056-250/125RC*</b> 3.10 - 2.50 x 1.75 - 1.40		
<b>2.50 x 1.50</b>	<b>1056-250/150</b> 3.10 - 2.50 x 2.00 - 1.65	<b>1056-250/150RC*</b> 3.10 - 2.50 x 2.00 - 1.65		
<b>2.50 x 2</b>	<b>1056-250/22</b> 3.00 - 2.70 x 2.50 - 2.25	<b>1056-250/22RC*</b> 3.00 - 2.70 x 2.50 - 2.25		
<b>2.50 x 2.50</b>	<b>1056-250</b> 3.10 - 2.50 x 3.10 - 2.50	<b>1056-250RC</b> 3.00 - 2.70 x 3.00 - 2.70		
<b>3 x 1.50</b>	<b>1056-315</b> 3.50 - 3.15 x 1.95 - 1.65			<b>1056-315EB*</b> 3.70 - 3.15 x 1.95 - 1.80
<b>3 x 2</b>	<b>1056-32</b> 3.65 - 3.15 x 2.50 - 2.20	<b>1056-32RC*</b> 3.70 - 3.15 x 2.50 - 2.25		<b>1056-32EB*</b> 3.70 - 3.15 x 2.50 - 2.25
<b>3 x 2.50</b>	<b>1056-3/250*</b> 3.70 - 3.15 x 3.00 - 2.75	<b>1056-3/250RC*</b> 3.70 - 3.15 x 3.00 - 2.75		
<b>3 x 3</b>	<b>1056-33</b> 3.70 - 3.15 x 3.70 - 3.10	<b>1056-33RC</b> 3.70 - 3.15 x 3.70 - 3.10	<b>5056-33RC</b> 3.50 - 3.26 x 3.50 - 3.26	
<b>4 x 1.50</b>	<b>1056-415</b> 4.50 - 4.00 x 1.95 - 1.75			
<b>4 x 2</b>	<b>1056-42</b> 4.50 - 4.00 x 2.50 - 2.25	<b>1056-42RC*</b> 4.60 - 4.10 x 2.50 - 2.30		<b>1056-42EB*</b> 4.60 - 4.10 x 2.50 - 2.30
<b>4 x 3</b>	<b>1056-43</b> 4.65 - 4.25 x 3.65 - 3.25	<b>1056-43RC*</b> 4.65 - 4.25 x 3.50 - 3.30	<b>5056-43RC*</b> 4.50 - 4.26 x 3.50 - 3.26	<b>1056-43EB*</b> 4.65 - 4.25 x 3.50 - 3.30
<b>4 x 4</b>	<b>1056-44</b> 4.65 - 4.10 x 4.65 - 4.10	<b>1056-44RC</b> 4.65 - 4.10 x 4.65 - 4.10	<b>5056-44RC</b> 4.50 - 4.26 x 4.50 - 4.26	
<b>5 x 4</b>	<b>1056-54</b> 5.65 - 5.25 x 4.50 - 4.00	<b>1056-54RC*</b> 5.70 - 5.10 x 4.55 - 3.95	<b>5056-54RC*</b> 5.50 - 5.03 x 4.40 - 3.93	<b>1056-54EB*</b> 5.70 - 5.10 x 4.60 - 4.05
<b>5 x 5</b>	<b>1056-55</b> 5.70 - 5.10 x 5.70 - 5.10	<b>1056-55RC</b> 5.70 - 5.10 x 5.70 - 5.10		
<b>6 x 4</b>	<b>1056-64</b> 6.85 - 6.25 x 4.60 - 4.10	<b>1056-64RC*</b> 6.85 - 6.25 x 4.55 - 4.40	<b>5056-64RC*</b> 6.65 - 6.18 x 4.50 - 4.03	<b>1056-64EB*</b> 6.80 - 6.30 x 4.60 - 4.15
<b>6 x 5</b>	<b>1056-65</b> 6.65 - 6.10 x 5.65 - 5.15	<b>1056-65RC*</b> 6.80 - 6.30 x 5.70 - 5.10	<b>5056-65RC*</b> 6.65 - 6.18 x 5.50 - 5.03	<b>1056-65EB*</b> 6.80 - 6.30 x 5.70 - 5.10
<b>6 x 6</b>	<b>1056-66</b> 6.80 - 6.30 x 6.80 - 6.30	<b>1056-66RC</b> 6.80 - 6.30 x 6.80 - 6.30	<b>5056-66RC</b> 6.65 - 6.18 x 6.65 - 6.18	
<b>8 x 4</b>	<b>1056-84*</b> 8.60 - 8.05 x 4.55 - 4.20	<b>1056-84RC*</b> 8.75 - 8.00 x 4.65 - 4.25		<b>1056-84EB*</b> 8.75 - 8.00 x 4.65 - 4.25
<b>8 x 6</b>	<b>1056-86</b> 8.60 - 8.05 x 6.50 - 6.10	<b>1056-86RC*</b> 8.75 - 8.00 x 6.75 - 6.50	<b>5056-86RC*</b> 8.65 - 8.18 x 6.35 - 5.88	<b>1056-86EB*</b> 8.75 - 8.00 x 6.75 - 6.50
<b>8 x 8</b>	<b>1056-88</b> 8.75 - 8.00 x 8.75 - 8.00	<b>1056-88RC</b> 8.75 - 8.00 x 8.75 - 8.00	<b>5056-88RC</b> 8.65 - 8.18 x 8.65 - 8.18	

(Continued from previous page)

\* Insert bushing included.  
 Red high torque clamps included.



**1056 & 5056**  
 Series  
 Couplings

**Cast Iron, Plastic, Steel to Cast Iron, Plastic, Steel**

NOMINAL PIPE SIZE (INCHES)	STANDARD RANGE "A" x "B"	1000 RC SERIES RANGE "A" x "B"	5000 RC SERIES RANGE "A" x "B"	ECCENTRIC RANGE "A" x "B"
<b>10 x 8</b>	<b>1056-10-8</b> 10.60 - 9.60 x 8.65 - 7.85	<b>1056-10-8RC*</b> 10.80 - 10.10 x 8.85 - 8.30	<b>5056-10-8RC*</b> 10.65 - 10.18 x 8.65 - 8.18	<b>1056-10-8EB*</b> 10.80 - 10.10 x 8.85 - 8.30
<b>10 x 10</b>	<b>1056-1010</b> 10.80 - 10.10 x 10.80 - 10.10	<b>1056-1010RC</b> 10.80 - 10.10 x 10.80 - 10.10	<b>5056-1010RC</b> 10.65 - 10.18 x 10.65 - 10.18	
<b>12 x 10</b>	<b>1056-1210</b> 12.75 - 11.85 x 10.80 - 10.00	<b>1056-1210RC*</b> 12.75 - 12.00 x 11.00 - 10.25	<b>5056-1210RC*</b> 12.55 - 12.08 x 10.75 - 10.28	<b>1056-1210EB*</b> 12.75 - 12.00 x 10.75 - 10.25
<b>12 x 12</b>	<b>1056-1212</b> 12.75 - 12.00 x 12.75 - 12.00	<b>1056-1212RC</b> 12.75 - 12.00 x 12.75 - 12.00	<b>5056-1212RC</b> 12.55 - 12.08 x 12.55 - 12.08	
<b>14 x 14</b>	<b>1056-1414</b> 14.50 - 13.00 x 14.50 - 13.00	<b>1056-1414RC</b> 14.50 - 13.00 x 14.50 - 13.00		
<b>15 x 10</b>	<b>1056-1510*</b> 15.75 - 15.40 x 11.00 - 10.25			<b>1056-1510EB*</b> 15.75 - 14.50 x 10.75 - 10.10
<b>15 x 12</b>	<b>1056-1512</b> 16.35 - 15.50 x 12.60 - 11.75	<b>1056-1512RC*</b> 15.75 - 14.50 x 12.65 - 11.70		<b>1056-1512EB*</b> 15.75 - 14.50 x 12.65 - 11.70
<b>15 x 15</b>	<b>1056-1515</b> 15.75 - 14.50 x 15.75 - 14.50	<b>1056-1515RC</b> 15.75 - 14.50 x 15.75 - 14.50	<b>5056-1515RC</b> 15.40 - 14.93 x 15.40 - 14.93	
<b>16 x 16</b>	<b>1056-1616</b> 16.50 - 15.00 x 16.50 - 15.00	<b>1056-1616RC</b> 16.50 - 15.00 x 16.50 - 15.00		
<b>18 x 18</b>	<b>1056-1818</b> 19.00 - 17.50 x 19.00 - 17.50	<b>1056-1818RC</b> 19.00 - 17.50 x 19.00 - 17.50	<b>5056-1818RC</b> 18.50 - 18.03 x 18.50 - 18.03	
<b>20 x 20</b>	<b>1056-2020</b> 20.50 - 19.00 x 20.50 - 19.00	<b>1056-2020RC</b> 20.50 - 19.00 x 20.50 - 19.00		
<b>21 x 21</b>	<b>1056-2121</b> 22.50 - 20.50 x 22.50 - 20.50	<b>1056-2121RC</b> 22.50 - 20.50 x 22.50 - 20.50		
<b>24 x 24</b>	<b>1056-2424</b> 25.00 - 23.00 x 25.00 - 23.00	<b>1056-2424RC</b> 25.00 - 23.00 x 25.00 - 23.00	<b>5056-2424RC</b> 24.50 - 24.03 x 24.50 - 24.03	
<b>27 x 27</b>	<b>1056-2727</b> 28.20 - 26.20 x 28.20 - 26.20	<b>1056-2727RC</b> 28.20 - 26.20 x 28.20 - 26.20		

Resources

**CUSTOM CONNECTIONS** Any size, any material.

1057 & 5057 Series Couplings

Concrete to Ductile Iron

NOMINAL PIPE SIZE (INCHES)	STANDARD RANGE "A" x "B"	1000 RC SERIES RANGE "A" x "B"	5000 RC SERIES RANGE "A" x "B"	ECCENTRIC RANGE "A" x "B"
4 x 4	1057-44* 5.85 - 5.15 x 5.15 - 4.50	1057-44RC* 5.85 - 5.15 x 5.15 - 4.50		
6 x 4	1057-64* 7.90 - 7.30 x 5.15 - 4.50			1057-64EB* 7.90 - 7.30 x 5.15 - 4.50
6 x 6	1057-66* 7.90 - 7.30 x 6.90 - 6.25	1057-66RC* 7.90 - 7.30 x 6.90 - 6.25		
6 x 8	1057-68* 9.25 - 8.55 x 7.85 - 7.20	1057-68RC* 9.25 - 8.55 x 7.85 - 7.20		1057-68EBRC* 9.25 - 8.55 x 7.85 - 7.20
8 x 6	1057-86* 10.20 - 9.50 x 6.90 - 6.25	1057-86RC* 10.65 - 9.90 x 6.90 - 6.25		
8 x 8	1057-88 10.20 - 9.50 x 9.00 - 8.45	1057-88RC* 10.65 - 9.90 x 9.15 - 8.60		
10 x 10	1057-1010* 12.70 - 12.00 x 11.30 - 10.45	1057-1010RC* 12.70 - 12.00 x 11.30 - 10.45		
10 x 10 LC			5057-1010LCRC* 14.00 - 13.53 x 11.10 - 10.63	
12 x 6	1057-12-6* 15.45 - 14.50 x 6.90 - 6.25			1057-12-6EB* 15.45 - 14.50 x 6.90 - 6.25
12 x 8	1057-12-8* 16.50 - 15.50 x 9.20 - 8.85			1057-12-8EB* 15.75 - 14.50 x 9.20 - 8.85
12 x 10	1057-1210* 16.50 - 15.50 x 11.30 - 10.45			
12 x 10 LC	1057-1210LC* 16.00 - 15.10 x 11.30 - 10.45			
12 x 12	1057-1212* 15.45 - 14.50 x 13.50 - 12.50	1057-1212RC* 15.45 - 14.50 x 13.50 - 12.50		
12 x 12 LC	1057-1212LC* 16.00 - 15.10 x 13.50 - 12.50	1057-1212LCRC* 16.00 - 15.10 x 13.50 - 12.50		
15 x 8	1057-15-8* 20.25 - 18.75 x 9.20 - 8.85			1057-15-8EB* 20.25 - 18.75 x 9.20 - 8.85
15 x 10	1057-1510* 20.25 - 18.75 x 11.30 - 10.45			
15 x 12	1057-1512* 20.25 - 18.75 x 13.50 - 12.50	1057-1512RC* 20.20 - 18.90 x 13.50 - 12.50		
15 x 15	1057-1515* 20.20 - 18.90 x 16.75 - 16.10	1057-1515RC* 20.20 - 18.90 x 16.75 - 16.10		
18 x 18	1057-1818* 22.50 - 21.00 x 19.80 - 19.35	1057-1818RC* 22.50 - 21.00 x 19.80 - 19.35		
24 x 24	1057-2424* 30.50 - 29.00 x 25.90 - 25.45	1057-2424RC* 30.50 - 29.00 x 25.90 - 25.45		

Resources

**CUSTOM CONNECTIONS** Any size, any material.

# Plumbing Market Sales Reps

## USA

- 1. David Gooding, Inc.**  
Brockton, MA  
(508) 894-2000  
ME, NH, VT, MA, RI, CT
- 2. Empire State Assoc.**  
Ballston Spa, NY  
(518) 602-0271  
NY
- 3. Altherm, Inc.**  
Englewood, NJ  
(201) 871-0500  
New York City, Long Island,  
Northern New Jersey
- 4. Rich-Tomkins Company, Inc.**  
Aston, PA  
(610) 859-3552  
E. PA, Southern NJ, DE
- 5. Fehr & Cuda Sales, Inc.**  
Greensbug, PA  
(724) 838-9394  
West PA & WV
- 6. Lowder Sales**  
Lewis Center, OH  
(800) 221-5650  
OH
- 7. Lozuaway & Assoc.**  
Grand Blanc, MI  
(810) 234-1635  
MI
- 8. Ashworth—Train Assoc.**  
Indianapolis, IN  
(317) 722-1950  
IN
- 9. Kast Marketing, Inc.**  
Bensonville, IL  
(630) 227-0600  
North-IL
- 10. McCullough & Assoc.**  
Edina, MN  
(952) 946-0126  
MN, WI, ND, SD, Upper MI
- 11. Mid-America Sales Group**  
Grimes, IA  
(515) 986-9446  
IA, NE

- 12. Mack McClain & Assoc.**  
Olathe, KS  
(913) 339-6677  
KS, W. MO
- 13. T.M. Sales**  
Denver, CO  
(303) 375-1515  
CO, MT, WY
- 14. Marshall-Rodeno Assoc.**  
West Jordan, UT  
(801) 566-8225  
UT, ID
- 15. Gordon & Assoc.**  
Vancouver, WA  
(360) 566-1470  
WA, OR, AK
- 16. Repcor Inc.**  
Rancho Cordova, CA  
(916) 386-2233  
N. CA & N. NV
- 17. Carrhill Company**  
City of Commerce, CA  
(323) 724-6087  
S. CA, Clark County, NV, HI
- 18. New Horizon Sales, Inc.**  
Phoenix, AZ  
(602) 437-4795  
AZ
- 19. Stan Roberts & Assoc., Inc.**  
Houston, TX  
(713) 224-9845  
South TX  
  
Dallas, TX  
(214) 637-2816  
North TX
- 20. PSA**  
Little Rock, AR  
(501) 312-8700  
AR
- 21. Southwest Sales**  
Broken Arrow, OK  
(972) 881-8757  
OK
- 22. Mack McClain**  
St. Louis, MO  
(314) 894-8188  
South-IL, East-MO

- 23. Billingsley BWC**  
Kenner, LA  
(504) 602-8100  
LA, MS
- 24. Wm. M. McClain Co, Inc.**  
Nashville, TN  
(615) 226-9601  
TN
- 25. Wiggs-Haun & Bohan**  
Nashville, TN  
(615) 350-8334  
AL, Panhandle FL
- 26. United Sales Agency**  
Marietta, GA  
(770) 514-7444  
GA
- 27. Carr Company**  
Boca Raton, FL  
(561) 997-0999  
FL, except Panhandle
- 28. Carolina Sales**  
Charlotte, NC  
(803) 831-7227  
NC, SC
- 29. Barger & Assoc.**  
Yorktown, MD  
(888) 697-3755  
VA, D.C., MD
- 30. M & M Sales, Inc.**  
Albuquerque, NM  
(505) 884-1733  
NM, El Paso, TX
- 31. Kemper Sales & Assoc.**  
Nicholasville, KY  
(859) 881-8624  
KY

## PUERTO RICO

- 33. Inter American Builders Agencies**  
Carolina, PR  
(787) 752-0200  
Puerto Rico

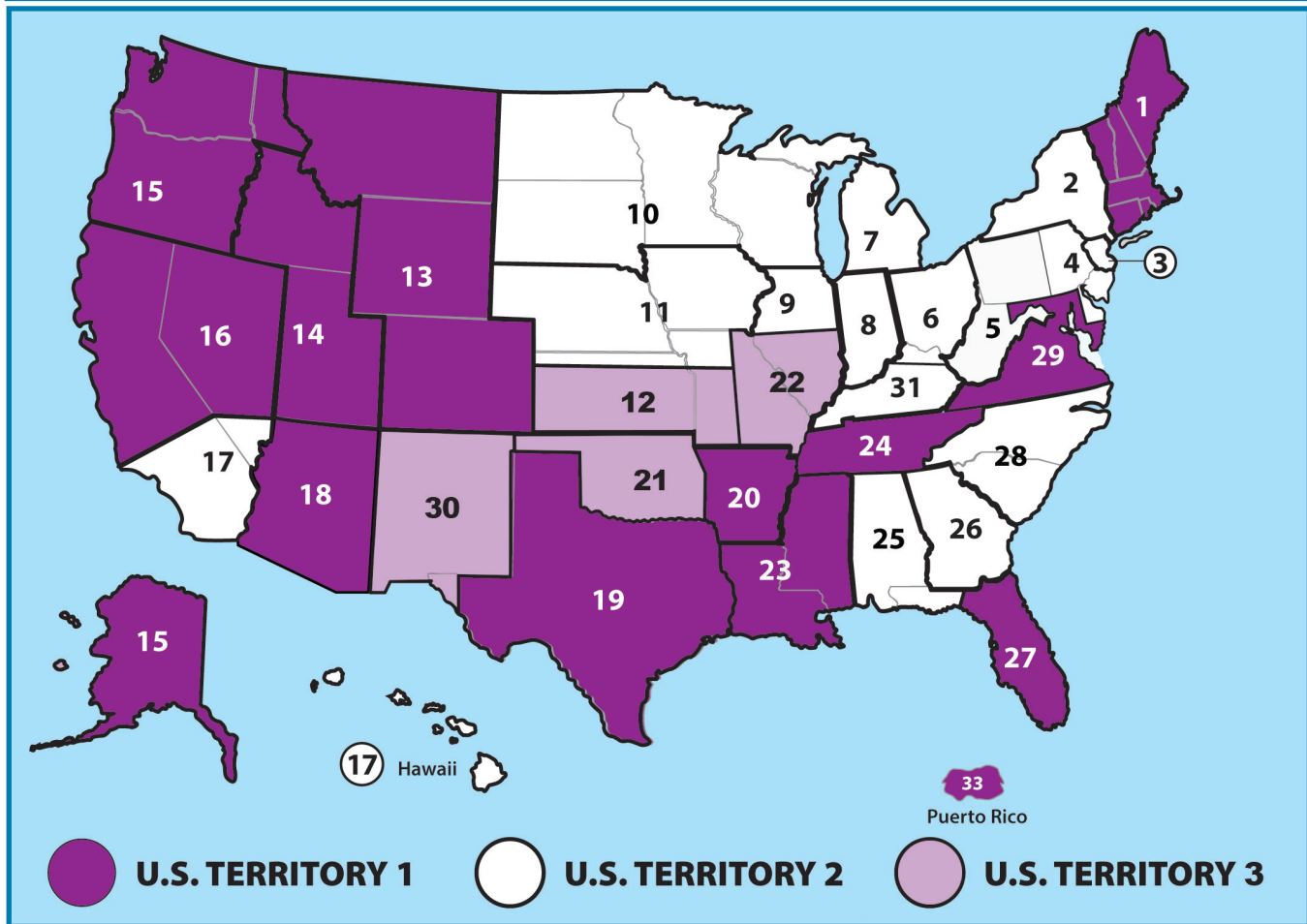
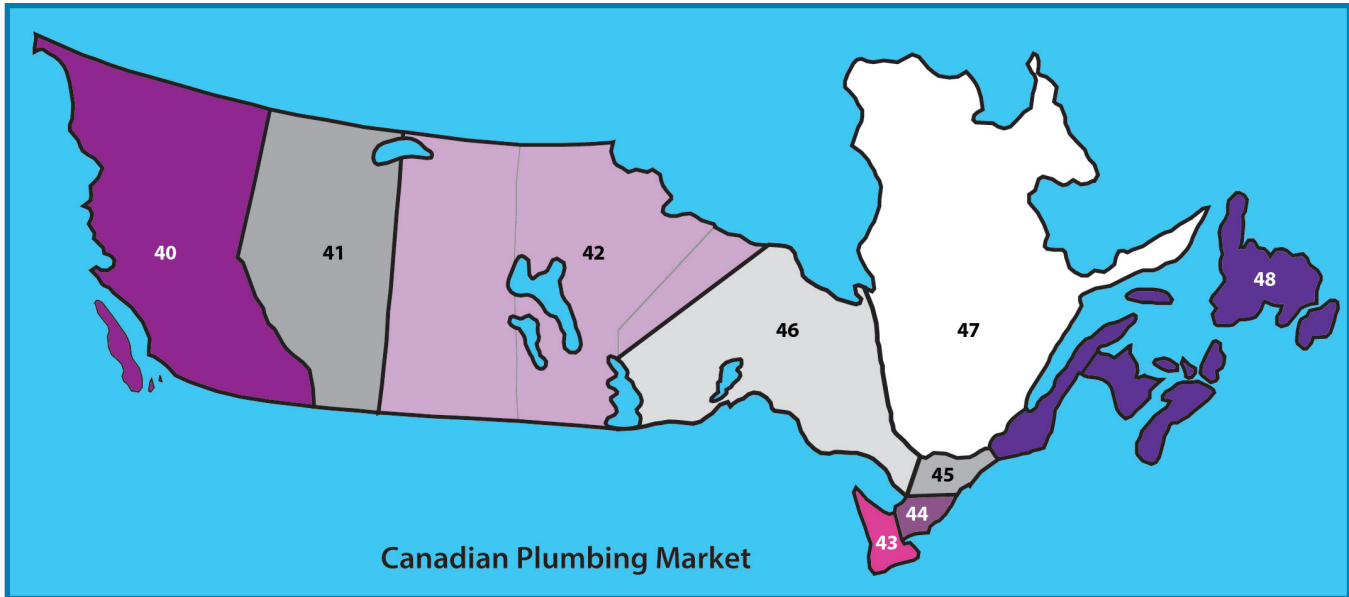
## MEXICO

- 34. Ardent Sales**  
Long Beach, CA  
(562) 552-4169  
Mexico

## CANADA

- 40. Barclay Sales LTD.**  
Port Coquitlam, BC  
(604) 945-1010
- 41. Spectrum Sales Agencies**  
1982 LTD.  
Calgary, Alberta  
(403) 255-8332  
  
Edmonton, Alberta  
(780) 486-2525
- 42. Jones Goodridge**  
Winnipeg, Manitoba  
(204) 632-6221  
  
Regina, Sask  
(306) 585-2854  
  
Saskatoon, Sask  
(306) 933-4377
- 43. Battscan Power Marketing**  
London, Ontario  
(519) 856-1380  
Southwestern Ontario
- 44. Armco Agencies LTD.**  
Mississauga, Ontario  
(905) 238-8448  
Central Ontario
- 45. Ventes Bergeron Sales**  
Russell, Ontario  
(613) 445-4170  
Eastern Ontario
- 46. Battscan Power Marketing**  
London, Ontario  
(519) 856-1380  
Northern Ontario
- 47. Agencies J. Pierre**  
Sylvain, Inc.  
Boucherville, Que.  
(450) 655-9588  
  
Quebec, PQ  
(418) 570-0703
- 48. CBA Sales Agency**  
Moncton, NB  
(506) 874-1124

# Plumbing Market Sales Reps



Resources

# Waterworks Market Sales Reps

## USA

**1. David Gooding, Inc.**  
Brockton, MA  
(508) 894-2000  
ME, NH, VT, MA, RI, CT

**2. Empire State Assoc.**  
Ballston Spa, NY  
(518) 602-0271  
NY

**3. Saga Sales, Inc.**  
Englewood, NJ  
(908) 505-9990  
New York City, Long Island,  
Northern New Jersey

**4. Charles Morrow & Assoc.**  
Center Valley, PA  
(304) 472-9005  
E. PA, S. NJ, DE, VA, D.C., MD

**5. Fehr & Cuda Sales, Inc.**  
Greensburg, PA  
(724) 838-9394  
West PA & WV

**6. Hydrosourc**  
Chagrin Falls, OH  
(440) 247-9150  
IN, OH, Lower MI

**7. Eaton Mechanical Sales**  
Prarie View, IL  
(847) 980-7253  
North-IL

**8. Mack McClain & Assoc.**  
Olathe, KS  
(913) 339-6677  
KS, W. MO

St. Louis, MO  
(314) 894-8188  
South-IL, East-MO

**9. Mid-America Sales Group**  
Grimes, IA  
(515) 986-9446  
IA, NE

**10. McCullough & Assoc.**  
Edina, MN  
(952) 946-0126  
MN, WI, ND, SD, Upper MI

**11. Repmasters, Inc.**  
Commerce City, CO  
(303) 286-7575  
CO, MT, WY

**12. Marshall-Rodeno Assoc.**  
West Jordan, UT  
(801) 566-8225  
UT, ID

**13. Gordon & Assoc.**  
Vancouver, WA  
(360) 566-1470  
WA, OR, AK, HI

**14. Repcor Inc.**  
Rancho Cordova, CA  
(916) 386-2233  
N. CA & N. NV

**15. Stan Roberts & Assoc., Inc.**  
Houston, TX  
(713) 224-9845  
South TX

Dallas, TX  
(214) 637-2816  
North TX

**16. PSA**  
Little Rock, AR  
(501) 312-8700  
AR

**17. Southwest Sales**  
Broken Arrow, OK  
(972) 881-8757  
OK

**18. Billingsley BWC**  
Kenner, LA  
(504) 602-8100  
LA, MS

**19. Wm. M. McClain Co, Inc.**  
Nashville, TN  
(615) 226-9601  
TN

**20. Wiggs-Haun & Bohan**  
Nashville, TN  
(615) 350-8334  
AL

**21. Aqualine Sales**  
Buford, GA  
(770) 932-9001  
GA

**22. Infratech Group LLC**  
Orlando, FL  
(407) 291-2341  
FL

**23. Ultratech Water Resources**  
Shelby, NC  
(704) 445-0220  
NC, SC

**24. M & M Sales, Inc.**  
Albuquerque, NM  
(505) 884-1733  
NM, El Paso, TX

**25. Kemper Sales & Assoc.**  
Nicholasville, KY  
(859) 881-8624  
KY

**26. New Horizon Sales, Inc.**  
Phoenix, AZ  
(602) 437-4795  
Clark County, NV, AZ

**27. W4 (Westcoast Water Works Warehouse)**  
Corona, CA  
(951) 279-4444  
S. CA

**28. JT Sales Company**  
Temecula, CA  
(951) 501-6859  
S. CA

## PUERTO RICO

**29. Inter American Builders Agencies**  
Carolina, PR  
(787) 752-0200  
Puerto Rico

## MEXICO

**40. Ardent Sales**  
Long Beach, CA  
(562) 552-4169  
Mexico

## CANADA

**30. Barclay Sales LTD.**  
Port Coquitlam, BC  
(604) 945-1010

**31. Spectrum Sales Agencies**  
1982 LTD.  
Calgary, Alberta  
(403) 255-8332  
  
Edmonton, Alberta  
(780) 486-2525

**32. Jones Goodridge**  
Winnipeg, Manitoba  
(204) 632-6221

Regina, Sask  
(306) 585-2854

Saskatoon, Sask  
(306) 933-4377

**33. Battscan Power Marketing**  
London, Ontario  
(519) 856-1380  
Southwestern Ontario

**34. Armco Agencies LTD.**  
Mississauga, Ontario  
(905) 238-8448  
Central Ontario

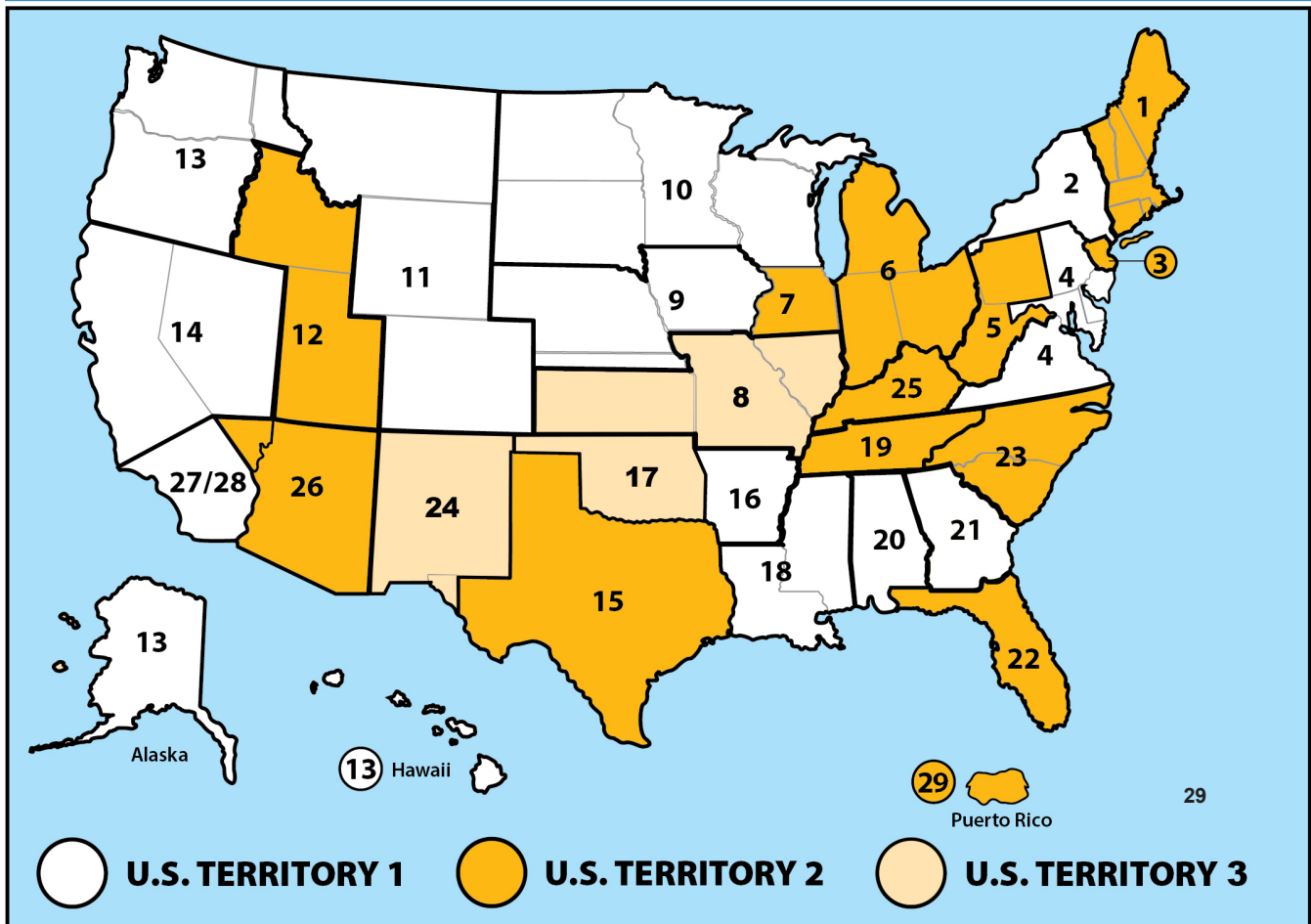
**35. Ventes Bergeron Sales**  
Russell, Ontario  
(613) 445-4170  
Eastern Ontario

**36. Battscan Power Marketing**  
London, Ontario  
(519) 856-1380  
Northern Ontario

**37. Agencies J. Pierre Sylvain, Inc.**  
Boucherville, Que.  
(450) 655-9588  
  
Quebec, PQ  
(418) 570-0703

**38. CBA Sales Agency**  
Moncton, NB  
(506) 874-1124

# Waterworks Market Sales Map



Resources

# Acid Resistance Chart

Maximum test pressure: 4.3 PSI (29.6 KPA)

Maximum operating temperature: 140° F non-consistent

Reagent	Flexible Coupling 70°F	Proflex 70°F	Reagent	Flexible Coupling 70°F	Proflex 70°F	Reagent	Flexible Coupling 70°F	Proflex 70°F
Acetic Acid 20%	R	R	Disodium Phosphate	N	N	Silver Cyanide	R	R
Acetic Acid 80%	N	N	Distilled Water	R	R	Silver Nitrate	R	R
Acetone	N	N	Ethers	N	N	Silver Sulfate	R	R
Alcohol (Methyl or Ethyl)	R	R	Ethyl Acetate	N	N	Sodium Bicarbonate	R	R
Aluminum Chloride	R	R	Ethylene Chloride	N	N	Sodium Bisulfite	R	R
Aluminum Sulfate	R	R	Ethylene Glycol	R	R	Sodium Carbonate	R	R
Alums	R	R	Fatty Acids (C6)	R	R	Sodium Cyanide	R	R
Ammonia Gas (Dry)	R	R	Ferric Chloride	R	R	Sodium Ferrocyanide	R	R
Ammonium Chloride	R	R	Ferric Sulfate	R	R	Sodium Hydroxide	R	R
Ammonium Hydroxide	R	R	Fluorine (Gas Wet)	N	N	Sodium Hypochlorite	R	N
Ammonium Nitrate	R	R	Formaldehyde (20%)	R	R	Sodium Sulfate	R	R
Ammonium Phosphate	R	R	Formic Acid (10%)	R	R	Sodium Sulfide	R	R
Ammonium Sulfate	R	R	Freon 12 Dry	N	R	Sodium Sulfite	R	R
Ammonium Sulfide	R	R	Fruit Juices & Pulp	R	R	Sodium Thiosulfate	R	N
Amyl Chloride	N	N	Furfural	N	N	Stannic Chloride	R	N
Aniline	N	N	Gasoline (Refined)	N	N	Stannous Chloride	R	R
Aqua Regia	N	N	Glucose	R	R	Stearic Acid	R	R
Barium Chloride	R	R	Glycerine	R	R	Sulfite Liquor	R	R
Barium Hydroxide	R	R	Hydrobromic Acid (20%)	R	N	Sulfur	R	N
Barium Sulfate	R	R	Hydrochloric Acid	R	N	Sulfur Dioxide (Dry)	R	N
Barium Sulfide	R	R	Hydrocyanic Acid	R	R	Sulfur Dioxide (Wet)	R	N
Beer	R	R	Hydroquinone	R	N	Sulfuric Acid 50%	R	R
Beet Sugar Liquors	R	R	Hypochlorous Acid	R	N	Sulfuric Acid 70%	N	N
Benzene	N	N	Iodine	N	N	Sulfuric Acid 93%	N	N
Benzoic Acid	R	N	Kerosene	N	N	Sulfurous Acid	R	N
Black Liquor	R	R	Lactic Acid 25%	R	R	Tannic Acid	R	R
Bleach 12.5% active Cl <sub>2</sub>	R	N	Linseed Oil	R	R	Tanning Liquors	R	R
Boric Acid	R	R	Liquors	N	N	Tartaric Acid	R	R
Bromic Acid	R	N	Machine Oil	N	N	Toluene	N	N
Bromine Water	N	N	Magnesium Chloride	R	R	Trichloroethylene	N	N
Butane	N	R	Magnesium Sulfate	R	R	Triethanolamine	N	N
Butyric Acid	N	N	Maleic Acid	N	N	Trisodium Phosphate	R	R
Calcium Carbonate	R	R	Methyl Chloride	N	N	Turpentine	N	N
Calcium Chloride	R	R	Methyl Ethyl Ketone	N	N	Urea	R	R
Calcium Hydroxide	R	R	Milk	R	R	Urine	R	R
Calcium Hypochlorite	R	N	Mineral Oils	N	R	Vinegar	R	R
Calcium Sulfate	R	R	Muriatic Acid	R	N	Water (Fresh)	R	R
Cane Sugar Liquors	R	R	Nickel Chloride	R	R	Water (Salt)	R	R
Carbon Bisulfide	N	N	Nickel Sulfate	R	R	Whiskey	R	R
Carbon Dioxide	R	R	Nitric Acid 0-40%	R	N	Wines	R	R
Carbon Monoxide	R	R	Nitric Acid 41-100%	N	N	Xylene	N	N
Carbon Tetrachloride	N	N	Oleic Acid	N	N	Zinc Chloride	R	R
Carbon Acid	R	R	Oleum	N	N	Zinc Sulfate	R	R
Caustic Soda	R	N	Oxalic Acid	R	R			
Caustic Soda 50%	R	R	Palmitic Acid 10%	R	R			
Caustic Potash	R	R	Perchloric Acid	N	N			
Chloride (Dry)	N	N	Petroleum Oils (Sour)	N	N			
Chloride (Wet)	N	N	Phenol 5%	N	N			
Chloroacetic Acid	N	N	Phosphorous Trichloride	N	N			
Chlorobenzene	N	N	Photographic Solutions	R	R			
Chloroform	N	N	Picric Acid	N	N			
Chromic Acid 10%	R	N	Plating Solution	R	R			
Chromic Acid 50%	N	N	Potassium Carbonate	R	R			
Citric Acid	R	R	Potassium Chlorate	R	R			
Copper Chloride	R	R	Potassium Chloride	R	R			
Copper Cyanide	R	R	Potassium Cyanide	R	R			
Copper Nitrate	R	R	Potassium Dichromate	R	R			
Copper Sulfate	R	R	Potassium Hydroxide	R	R			
Cottonseed Oil	R	R	Potassium Permanganate 10%	R	R			
Cresol	N	N	Potassium Sulfate	R	R			
Cyclohexanol	N	R	Propane Gas	R	R			
Cyclohexanone	N	N	Propyl Alcohol	R	R			
Dimethylamine	N	N	Sea Water	R	R			
Diocyl Pthalate	N	N	Sewerage	R	R			

**NOTE:** The data listed in this table is only to give information in regard to general use and does not constitute a guarantee. Materials should be tested under actual service to determine suitability for a particular purpose.

R - Recommended    N - Not Recommended



# TERMS

All prices shown are Trade/List, stated in U.S. currency and subject to change without notice

**MINIMUM INVOICE** - None

**PAYMENT TERMS** - 1% 10th prox. NET 30 days unless otherwise stated. Shortage claims must be made to Fernco within 15 days after delivery

**FREIGHT TERMS** - Prepaid and allowed on net order of \$750.00 or more unless otherwise stated. All others will be prepaid and billed. Claims for loss or damage must be filed with the freight carrier

**SALES POLICY** - Fernco products are available to any legitimate wholesaler, pipe manufacturer or distributor with approved credit

**RETURN POLICY** - All returns must be preceded by factory authorization. Minimum 15% restocking charge will apply to all standard Fernco products. All materials returned to Fernco should be in original cartons and be in resalable condition. This amount is subject to change depending on condition of items returned to Fernco

- Fernco Custom Parts are Non-Refundable
- Freight must be prepaid on all return shipments
- Returns will not be allowed after 90 days of invoice date

## LIMITED WARRANTY

Fernco warrants its product(s) against defects in workmanship or materials for one (1) year from date of original purchase (unless a shorter period is expressly provided with respect to a particular product). Fernco's total liability under any warranty, or any other claim arising in any way from the product or its use, is limited, at Fernco's option, to refund or replacement of any such product returned to Fernco within the one-year warranty period and determined by Fernco to be defective. To the extent permitted by law, Fernco disclaims and excludes any and all other warranties, express or implied, including without limitation any implied warranty of merchantability or fitness for a particular purpose, and in no event shall Fernco be liable for special, incidental or consequential damages. Failure to follow the installation instructions provided by Fernco will void this warranty. To make a warranty claim, purchaser should have the original receipt and contact Fernco, Inc. Customer Service Department, 810-503-9000. Purchaser is responsible for any shipping charges.

If state law preserves implied warranties, including implied warranties of merchantability and fitness for a particular purpose, such warranties are limited to one-year from the date of the original purchase and as otherwise set forth above. Some states do not allow limitations on how long an implied warranty lasts, or the exclusion of incidental or consequential damages, so such limitation(s) or exclusion(s) may not apply to you.

This written warranty gives you specific legal rights, and you may also have other rights which vary from state to state.



### Fernco, Inc.

300 S. Dayton St.  
Davison, MI 48423  
fernco.com  
P: (810) 503-9000  
F: (810) 503-1015

### Fernco West

855 Linda Way  
Sparks, NV 89431  
fernco.com  
P: (810) 503-9000  
F: (810) 503-1015

### Fernco Connectors LTD

850 Philip Street E.  
Sarnia, Ontario N7T 1Z6  
fernco.ca  
P: (519) 332-6711  
F: (519) 332-8610

# Compliant Couplings

## Standard Flexible Couplings

### ABOVE & BELOW GROUND

#### FEATURES:

- Connects pipes of same or different materials and sizes
- Leak-proof, root-proof and resistant to many chemicals, ultra violet rays, fungus growth and normal sewer gas

Complies with ASTM D 5926, C 1173 and CSA B602

\* Verify with local code officials



## 1000RC / 5000RC Series Couplings

### BELOW GROUND

#### FEATURES:

- High torque clamps spot welded in place
- Designed for resistance to heavy earth loads and shear forces
- Mechanical coupling for drain, waste, vent and sewer pipe

Complies with ASTM D 5926, C 1173 and CSA B602



## Specialty Couplings PROFLEX

### ABOVE GROUND

#### FEATURES:

- Shielded transition coupling
- Creates rigid, long-lasting pipe joints
- Connects cast iron, plastic, steel, copper and tubular pipe

Complies with ASTM C 564, ASTM C 1460 and CSA B602



## Universal Coupling HULK

### BELOW GROUND

#### FEATURES:

- Embedded with Stainless Steel Rods
- Protects the pipe against ground movement
- Heavy duty, multi-dimensional, non-shear sewer & drain coupling

Complies with ASTM C 1173 and CSA B602



## Flexible Chemical Couplings

### ABOVE & BELOW GROUND

#### FEATURES:

- Provide flexible & watertight, highly chemical resistant, connections on drainage system
- Transitions dissimilar chemical piping and sizes
- Chemical resistant drain system, connects chemical waste piping to waste tanks

Complies with ASTM C 1173



## Corrugated Pipe Couplings

### BELOW GROUND

#### FEATURES:

- Connects corrugated polyethylene drainage and irrigation systems to sewer, drain or DWV plastic pipe
- Connect ADS and Hancor corrugated polyethylene to plastic
- Ideal for use in storm and sub-soil drainage systems, farm irrigation systems and residential

Complies with ASTM D 5926



## Expansion Joint Couplings

### ABOVE GROUND

#### FEATURES:

- Residential and commercial applications
- Applicable for drain, waste and vent stacks, and interior rain water conductor systems
- Unique one-piece construction

Complies with CSA B602



## ICON Pushfit Coupling

### ABOVE & BELOW GROUND

#### FEATURES:

- Internal Pushfit Connector - 4" & 6" Sewer Pipe and DWV
- Ideal for the connection of plastic (SDR 35, Sch 40), Cast Iron and Copper
- Can be removed and re-used / No Tools
- Watertight connection on any pipe material

Complies with ASTM C 1173



# Connection Solutions

## THE HULK COUPLING



**Strong. Flexible.  
Steel Reinforced  
Universal Coupling**

Complies with  
ASTM C 1173 and  
CSA B602



### HULK Coupling Benefits

- One universal coupling connects most pipe materials
- One coupling per nominal size
- Heavy duty, multi-dimensional, non-shear sewer & drain coupling
- Protects the pipe against ground movement
- Embedded with Stainless Steel Rods for shear resistance

Part Number	Size	Dimensional Range
HULK4	4"	4.20" - 5.60"
HULK5	5"	5.30" - 6.70"
HULK6	6"	6.20" - 8.00"
HULK8	8"	8.40" - 10.15"
HULK10	10"	10.50" - 12.75"
HULK12	12"	12.50" - 15.30"

## ICON Pushfit

**Internal Pushfit Connector -  
4" & 6" Sewer Pipe and DWV**

### ICON Coupling Benefits

- No tools required
- Use where standard couplings cannot be used
- No need to expose external surface of pipe
- Watertight connection on any pipe material
- Can be removed and re-used



Complies with ASTM C 1173

Product Code	Nominal Dia. (inch)	Description
IC44P	4	Connects two pipes having an I.D. range of: 3.90"-4.06"
IC66P	6	Connects two pipes having an I.D. range of: 5.83"-6.02"

World-Wide Manufacturer Of Flexible Couplings



# EMPOWERING CONNECTIONS SINCE 1964

HONORING OUR LEGACY. ENGINEERING OUR FUTURE.



(810) 503-9000



[www.fernco.com](http://www.fernco.com)