

Channel Drains • Catch Basins • Grates • Valve Boxes



**The calm
after the storm.**



StormDrain™ Load Recommendation Guide

CLASS A

- Loads of 1 - 60 psi.
- Recommended for pedestrian, bicycles and wheel chair traffic.

CLASS B

- Loads of 61 - 175 psi.
- Recommended for medium-duty pneumatic tire traffic, autos and light trucks at speeds less than 20 mph.

CLASS C

- Loads of 176 - 325 psi.
- Recommended for heavy-duty pneumatic tire forklifts and tractor trailers at speeds less than 20 mph, H-20 rated.

CLASS D

- Loads of 326 - 575 psi.
- Recommended for heavy-duty hard tire forklifts at speeds less than 20 mph, H-20 rated.

Standard Warranty

Fernco, Inc. ("Sellers") warrants to the original Buyer only, that all products shall be free from defects in design and manufacture for a period of one year from the date of delivery, provided that such products are installed, used and/or adjusted only in strict accordance with the appropriate guidelines.

FOR USE IN NON-VEHICULAR TRAFFIC AREAS. WEIGHTS AND DIMENSIONS MAY VARY.

MODIFICATION OF PRODUCT VOIDS WARRANTY. In no event shall the foregoing warranty extend to any products in any way caused or allowed to be, or installed, operated, or used in such a manner as to be subjected, or exposed, to conditions of misuse, abuse or accident. The sole obligation of Seller, and the exclusive remedy of Buyer under this warranty, under any other warranty, expressed or implied, under any rule of law including strict liability, negligence, indemnity, or otherwise, is the replacement of the defective goods by Seller, or at Seller's sole election, the return of the purchase price of the defective goods.

Any products returned by Buyer to Seller under the foregoing terms shall be returned to Seller's place of business with freight prepaid, accompanied or preceded by Buyer's particularized statement of the claimed defect. The risk of loss and freight charges to and from Seller in connection with any returned products shall be borne by the Buyer, but Seller shall bear such additional freight charges arising in connection with any such returned products ultimately determined by the Seller to be defective under the terms of the foregoing warranty.

This agreement of Seller to sell its products is expressly conditioned upon the Buyer's assent to, and Seller agrees to sell its products upon all terms and conditions set forth above and on the face hereof. Buyer's acceptance of any products provided under this sale shall constitute such assent.

THE FOREGOING WARRANTY IS EXCLUSIVE AND IN LIEU OF ANY AND ALL OTHER WARRANTIES, EXPRESSED OR IMPLIED. No warranty of merchantability, no implied warranty of product for any particular purpose, and no implied warranty arising by usage of trade, course of dealing or course of performance is given by Seller or shall arise by or in connection with this sale and/or the Seller's and/or Buyer's conduct in relation thereto or to each other, and in no event shall the Seller be liable for any special indirect, incidental or consequential damages arising in any way in connection with any products of the sale.

DRAINAGE



Channel Drainage & Accessories4-5



Distribution Boxes - 12" and 20"6-7
Including grates, risers and accessories



Drain Basins - Square - 9" and 12"8-9
Including grates, debris traps and accessories



Drain Basins - Round - 6"10-11
Including grates and debris traps



Drain Basins - Round - 9" and 12"12-13
Including grates



Drain Grates - Direct-To-Pipe14



Atrium Grates - Direct-To-Pipe15



Pop-Up Emitters - with Elbow15



VALVE BOXES



Valve Boxes - Round16



Meter Boxes - Rectangular16



Valve Boxes - Rectangular17



Valve Box Risers - Rectangular17

Strength By Design

Designed to withstand automotive vehicle weight without moving in concrete.

Meets Load Rating B (See page 1)



Bottom outlet in every Channel.



- Built in bottom outlet in each Channel is easily cut out with a utility knife and accommodates 4" sewer and drain pipes. The leaf guard also easily fits into the bottom outlet.

Simple accessory attachment.



- The Storm Drain 90° Corner, End Cap and End Outlet just slide into the female end of the Channels. They also each have tabs to fit into the male end of the Channels or the cut to length end of the Channels.

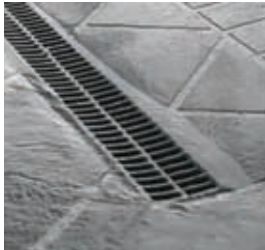
No clips or screws required to assemble.

Channel Drains



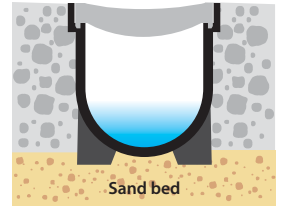
APPLICATIONS

The durability & high performance of the Fernco Storm Drain ensures a long lasting, permanent solution to the collection and dispersal of standing surface water. The easy installation is ideal for driveways, pools, patios, walkways, sports courts and more.



FEATURES

- Made from 100% recycled polypropylene
- Bottom outlet accommodates 4" drain pipe
- No clips or screws required to assemble



Backfill with concrete for vehicular traffic.

Channel Drain - Meets Load Rating B (See page 1)

Part No.	Color	Descriptions	Dimensions (inches) L x W x H	UPC	Weight Each Lbs.	Carton QTY
FSD-CHGG	Black	39.5" Channel Drain with Grey Grate	39.75 x 5 x 5.25	0 18578 00777 2	4.77	9
FSD-GP3G	Black	Contractor Pack: 3 Pieces of Channel with Grey Grate, 1 End Cap, 1 End Outlet	39.75 x 4.75 x 15.75	0 18578 00783 3	15.69	3

90° Corner

FSD-90CGG



90° Corner allows left or right hand extension of the Storm Drain Channel

End Cap

FSD-EC



End Caps just slide into Storm Drain Channel

Leaf Guard

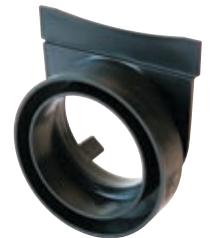
FSD-LG



Leaf Guard prevents debris from going down drain pipe

End Outlet

FSD-EO



End Outlet accommodates 3" & 4" Sewer & Drain pipe OR 3" & 4" Sch. 40 fitting hub

Channel Drain Accessories

Part No.	Color	Descriptions	Dimensions (inches) L x W x H	UPC	Weight Each Lbs.	Carton QTY
FSD-90CGG	Black	90° Corner with Grey Grate	6.63 x 6.63 x 5	0 18578 00778 9	0.90	4
FSD-EC	Black	End Cap for Channel Drain	4.75 x 5 x 1	0 18578 00779 6	0.11	10
FSD-EO	Black	End Outlet for Channel Drain	4.75 x 5 x 2.5	0 18578 00780 2	0.20	10
FSD-LG	Black	Leaf Guard for Channel Drain	3.5 x 3.5 x 3.5	0 18578 00781 9	0.10	10



12" D-Box

FEATURES

The most versatile box on the market today. You can choose what height you want your inlets and outlets to be. It also comes complete with the only seal on the market that accepts 2", 3", 4" smooth wall and corrugated pipe. No more different fittings to inventory! The 12" D-Box comes with stabilizing feet to anchor the box.

APPLICATIONS:

- Use as Rain Drain, D-Box, or Drop Box; allows for all configurations
- Use as a rain drain for gutters, driveways & sub surface drainage
- Use as a distribution box or drop box for onsite septic systems
- Use with the riser to bring cover or grate to grade as needed
- Accepts 2", 3", 4" Sch. 40, S&D and corrugated pipe
- Four stabilizing feet with every 12" D-Box



Unique D-Box Pipe Seals

The only true watertight seals on the market today. Our 4" seal fits in both our 12" and 20" plastic D-Box. It accepts 2", 3", 4" Sch. 40, S&D and corrugated pipe.



20" 8 Hole D-Box



Distribution Box Riser

We have combined all the best features of concrete and plastic risers to create our patented riser system. Our risers hold their shape, are stackable, screw together, and are water and airtight. Structural ribs inside prevent frost from adhering to the riser in frost prone areas.



Solid Cover or Grate Top Available

This box is great for large applications such as golf courses but is also a suitable size for the home. Accepts 2", 3" and 4" pipe.

Boxes

Part No.	Color	Descriptions	Dimensions (inches) L x W x H	UPC	Weight Each Lbs.	Carton QTY
FSD-3017-HB	Black	12" Round D-Box W/Feet & Seals	14.2 x 14.2 x 15.5	0 185780 1347 6	3.55	4
FSD-3017-20HB	Black	20" Round 8 Hole D-Box W/Seals	22.9 x 22.9 x 16.4	0 185780 1348 3	6.60	4

Distribution Box KIT - Includes Box, Grate or Lid and Seals

Part No.	Color	Descriptions	Dimensions (inches) L x W x H	UPC	Weight Each Lbs.	Carton QTY
FSD-3017-12BKIT	Black	Kit/12" Round D-box W/Grate,Feet & Seals	14.2 x 14.2 x 15.5	0 185780 1353 7	5.20	1
FSD-3017-20BKIT	Black	Kit/20" Round 8 Hole D-Box W/Grate & Seals	22.9 x 22.9 x 16.4	0 185780 1354 4	11.05	1
FSD-3017-12SKIT	Black	Kit/12" Round D-Box W/Lid,Feet & Seals	14.2 x 14.2 x 15.5	0 185780 1355 1	4.90	1
FSD-3017-20SKIT	Black	Kit/20" Round 8 Hole D-Box W/Lid & Seals	22.9 x 22.9 x 16.4	0 185780 1356 8	10.60	1

Distribution Box Seals and Nuts

Part No.	Color	Descriptions	Dimensions (inches) L x W x H	UPC	Weight Each Lbs.	Carton QTY
FSD-3001	Black	2", 3" or 4" D-Box Seal and Nut	5.7 x 5.7 x 1.4	0 185780 1359 9	0.10	20

Catch Basin / Box Risers

Part No.	Color	Descriptions	Dimensions (inches) L x W x H	UPC	Weight Each Lbs.	Carton QTY
FSD-3017-R	Green	6" Riser for 12" D-Box	14.6 x 14.6 x 7.3	0 185780 1357 5	2.30	4
FSD-3009	Green	6" Riser for 20" D-Box	22.8 x 22.8 x 7.3	0 185780 1358 2	4.00	4

Box Grates & Lids - Meets Load Rating B (See page 1)

Part No.	Color	Descriptions	Dimensions (inches) L x W x H	UPC	Weight Each Lbs.	Carton QTY
GRATES						
FSD-3017-GEB	Black	12" Round / Flat Grate	13.8 x 13.8 x 1.5	0 185780 1349 0	1.65	4
FSD-3017-G20B	Black	20" Round / Flat Grate	22 x 22 x 2	0 185780 1350 6	4.45	4
SOLID LIDS						
FSD-3017-CB	Black	12" Round / Solid Lid	13.8 x 13.8 x 1.5	0 185780 1351 3	1.35	4
FSD-3009-RC	Black	20" Round / Solid Lid	22 x 22 x 2	0 185780 1352 0	4.00	4

Catch Basins

9" and 12" SQUARE

APPLICATIONS

Use to collect medium-volume water flows from wet areas in yards, lawns, fairways and sports fields. Can also be used in patios, garages and driveways.

FEATURES

- Square catch basin with two open side outlets
- Two additional side knock-outs and one bottom knock-out for a total of five possible outlets
- Green and black grates available

USE WITH UNIVERSAL ADAPTER FOR:

- 3" and 4" Sewer & Drain pipe
- 3" and 4" corrugated pipe
- 3" and 4" triple wall pipe
- 4" Sch. 40 pipe



Square Catch Basin KIT

Includes: Catch Basin, Black Grate, 2 Universal Adapters, and Debris Trap.



Flat and Atrium Grates - in Black or Green

Made of durable polypropylene with UV inhibitors to reduce sun damage.



Universal Basin Adapter

Provides the flexibility to put the basin outlet on the side it is needed. Accepts 3" and 4" Sewer & Drain pipe, corrugated pipe, triple wall pipe and 3" and 4" Sch. 40.



Universal Plug

Seals any open basin outlets that are not needed.



Debris Trap

Catches debris and silt and reduces the risk of pipe clogging. Lifts out for easy cleaning.

Square Catch Basin

Part No.	Color	Descriptions	Dimensions (inches) L x W x H	UPC	Weight Each Lbs.	Carton QTY
FSD-090-CB-2	Black	9" Square Basin / 4 Side Outlets	9.5 x 9.5 x 10	0 185780 1287 5	2.50	4
FSD-120-CB-2	Black	12" Square Basin / 4 Side Outlets	12.5 x 12.5 x 13	0 185780 1288 2	4.36	4

Square Catch Basin KIT - Complete with flat grate, sand trap & 2 adapters

Meets Load Rating B (See page 1)

Part No.	Color	Descriptions	Dimensions (inches) L x W x H	UPC	Weight Each Lbs.	Carton QTY
FSD-090-K	Black	9" Square / Complete Basin Kit	9.5 x 9.5 x 10	0 185780 1299 8	5.47	1
FSD-120-K	Black	12" Square / Complete Basin Kit	12.5 x 12.5 x 13	0 185780 1300 1	8.53	1

Square Catch Basin Grates

Part No.	Color	Descriptions	Dimensions (inches) L x W x H	UPC	Weight Each Lbs.	Carton QTY
SQUARE FLAT - Meets Load Rating B (See page 1)						
FSD-094-SF	Black	9" Square / Flat Grate	9 x 9 x 1.25	0 185780 1289 9	1.43	10
FSD-090-SF	Green	9" Square / Flat Grate	9 x 9 x 1.25	0 185780 1290 5	1.43	10
FSD-124-SF	Black	12" Square / Flat Grate	12 x 12 x 1.25	0 185780 1293 6	2.31	10
FSD-120-SF	Green	12" Square / Flat Grate	12 x 12 x 1.25	0 185780 1294 3	2.31	10
SQUARE ATRIUM						
FSD-090-A	Green	9" Square / Atrium Grate	9 x 9 x 3	0 185780 1291 2	1.22	10
FSD-094-A	Black	9" Square / Atrium Grate	9 x 9 x 3	0 185780 1292 9	1.22	10
FSD-120-A	Green	12" Square / Atrium Grate	12 x 12 x 4	0 185780 1295 0	1.75	10
FSD-124-A	Black	12" Square / Atrium Grate	12 x 12 x 4	0 185780 1296 7	1.75	10

Adapters & Plugs

Part No.	Color	Descriptions	Dimensions (inches) L x W x H	UPC	Weight Each Lbs.	Carton QTY
FSD-UA-001	Black	Universal Catch Basin Adapter	7.25 x 7.25 x 3	0 185780 1331 5	0.55	20
FSD-UA-Plug	Black	Universal Catch Basin Plug	7 x 7 x .75	0 185780 1332 2	0.24	20

Square Sand Traps

Part No.	Color	Descriptions	Dimensions (inches) L x W x H	UPC	Weight Each Lbs.	Carton QTY
FSD-090-ST	Black	9" Square Debris Trap	8.25 x 8.25 x 1.5	0 185780 1297 4	0.47	20
FSD-120-ST	Black	12" Square Debris Trap	11 x 11 x 1.75	0 185780 1298 1	0.78	20

APPLICATIONS

Use to collect low-volume water flows from wet areas in yards, lawns, fairways and sports fields. Can also be used in patios, garages and drive-ways.

FEATURES

- Cost saving built-in universal outlet
- Stackable for easy storage

UNIVERSAL OUTLET FOR:

- 3" and 4" sewer and drain pipe
- 3" and 4" corrugated pipe
- 3" and 4" triple wall pipe
- 3" and 4" Sch. 40 pipe



Square Top and Atrium Grates Available

Made of durable polypropylene with UV inhibitors to reduce sun damage.



Single Universal Side Outlet

Made of durable ABS with cost saving universal outlet.



Universal Bottom Outlet

Made of durable ABS with cost saving universal outlet. Stackable for easy storage.



Debris Trap

Catches debris and silt and reduces the risk of pipe clogging. Lifts out for easy cleaning.

6" Round Catch Basins

Part No.	Color	Descriptions	Dimensions (inches) L x W x H	UPC	Weight Each Lbs.	Carton QTY
FSD-060-CB	Black	6" Round Basin / Bottom Outlet	6.5 x 6.5 x 6.25	0 185780 1301 8	0.94	20
FSD-060-CB-1	Black	6" Round Basin / 3" & 4" Single Outlet	8.25 x 6.5 x 8.5	0 185780 1302 5	1.23	10
FSD-060-CB-2	Black	6" Round Basin / 3" & 4" Double Outlet	9.75 x 6.5 x 8.5	0 185780 1303 2	1.44	10

6" Round Catch Basin Grates

Part No.	Color	Descriptions	Dimensions (inches) L x W x H	UPC	Weight Each Lbs.	Carton QTY
ROUND TOP - Meets Load Rating A (See page 1)						
FSD-064-R	Black	6" Round Grate / Bottom Outlet	7 x 7 x 2	0 185780 1322 3	0.55	10
FSD-060-R	Green	6" Round Grate / Bottom Outlet	7 x 7 x 2	0 185780 1323 0	0.55	10
SQUARE TOP - Meets Load Rating A (See page 1)						
FSD-064-S	Black	6" Square Grate / Bottom Outlet	6 x 6 x 2	0 185780 1314 8	0.45	10
ROUND ATRIUM						
FSD-064-A	Black	6" Round / Atrium Grate	6.75 x 6.75 x 5	0 185780 1328 5	0.60	40

6" Round Debris Trap

Part No.	Color	Descriptions	Dimensions (inches) L x W x H	UPC	Weight Each Lbs.	Carton QTY
FSD-060-ST	Black	6" Round Debris Trap	6 x 6 x 1.75	0 185780 1310 0	0.17	20

APPLICATIONS

Use to collect low-volume water flows from wet areas in yards, lawns, fairways and sports fields. Can also be used in patios, garages and drive-ways.

FEATURES

- Cost saving built-in universal outlet
- Stackable for easy storage

UNIVERSAL OUTLET FOR:

- 3" and 4" sewer and drain pipe
- 3" and 4" corrugated pipe
- 3" and 4" triple wall pipe
- 3" and 4" Sch. 40 pipe



Debris Trap

Catches debris and silt and reduces the risk of pipe clogging. Lifts out for easy cleaning.

9" and 12" Round Catch Basins

Part No.	Color	Descriptions	Dimensions (inches) L x W x H	UPC	Weight Each Lbs.	Carton QTY
FSD-090-RCB	Black	9" Round Basin / Bottom Outlet	9.5 x 9.5 x 7	0 185780 1304 9	1.50	10
FSD-120-RCB	Black	12" Round Basin / Bottom Outlet	12.5 x 12.5 x 7	0 185780 1305 6	1.94	10

9" and 12" Round Catch Basin Grates - Meets Load Rating A (See page 1)

Part No.	Color	Descriptions	Dimensions (inches) L x W x H	UPC	Weight Each Lbs.	Carton QTY
FSD-094X-RF	Black	9" Round / Flat Grate	9 x 9 x 1	0 185780 1306 3	1.11	10
FSD-090X-RF	Green	9" Round / Flat Grate	9 x 9 x 1	0 185780 1307 0	1.11	10
FSD-124X-RF	Black	12" Round / Flat Grate	12 x 12 x 1	0 185780 1308 7	2.07	10
FSD-120X-RF	Green	12" Round / Flat Grate	12 x 12 x 1	0 185780 1309 4	2.07	10

9" and 12" Round Debris Trap

Part No.	Color	Descriptions	Dimensions (inches) L x W x H	UPC	Weight Each Lbs.	Carton QTY
FSD-090-RST	Black	9" Round Debris Trap	8.25 x 8.25 x 2.5	0 185780 1311 7	0.41	20
FSD-120-RST	Black	12" Round Debris Trap	11.25 x 11.25 x 2.5	0 185780 1312 4	0.65	20



APPLICATIONS

For use with drain pipe and pipe fittings in areas not needing a drain basin or space restricts the use of a drain basin.

FEATURES

- Durable polypropylene construction
- UV inhibitors to reduce sun damage

USE WITH

- 3", 4" and 6" Sewer & Drain pipe
- 3", 4" and 6" corrugated pipe
- 3", 4" and 6" triple wall pipe
- 3", 4" and 6" belled end pipe
- 3", 4" and 6" SDR fittings
- 6" round Catch Basin

Bottom Outlet Grates - Meet Load Rating A (See page 1)

Part No.	Color	Descriptions	Dimensions (inches) L x W x H	UPC	Weight Each Lbs.	Carton QTY
SQUARE TOP						
FSD-054-S	Black	5" Square Grate / Bottom Outlet	4.75 x 4.75 x 1.75	0 185780 1313 1	0.24	20
FSD-064-S	Black	6" Square Grate / Bottom Outlet	6 x 6 x 2	0 185780 1314 8	0.45	10
FSD-094-S	Black	9" Square Grate / Bottom Outlet	5.88 x 5.88 x 2	0 185780 1315 5	1.14	10
FSD-090-S	Green	9" Square Grate / Bottom Outlet	5.88 x 5.88 x 2	0 185780 1316 2	1.14	10
ROUND TOP						
FSD-034-R	Black	3" Round Grate / Bottom Outlet	3.75 x 3.75 x 1.5	0 185780 1318 6	0.13	40
FSD-030-R	Green	3" Round Grate / Bottom Outlet	3.75 x 3.75 x 1.5	0 185780 1319 3	0.13	40
FSD-044-R	Black	4" Round Grate / Bottom Outlet	4.75 x 4.75 x 1.5	0 185780 1320 9	0.19	40
FSD-040-R	Green	4" Round Grate / Bottom Outlet	4.75 x 4.75 x 1.5	0 185780 1321 6	0.19	40
FSD-064-R	Black	6" Round Grate / Bottom Outlet	7 x 7 x 2	0 185780 1322 3	0.55	10
FSD-060-R	Green	6" Round Grate / Bottom Outlet	7 x 7 x 2	0 185780 1323 0	0.55	10
FSD-084-R	Black	8" Round Grate / Bottom Outlet	7.75 x 7.75 x 2.13	0 185780 1324 7	0.65	10
FSD-080-R	Green	8" Round Grate / Bottom Outlet	7.75 x 7.75 x 2.13	0 185780 1325 4	0.65	10



APPLICATIONS

For use in areas where floating debris would block a standard flat grate.

FEATURES

- Durable polypropylene construction
- UV inhibitors to reduce sun damage

USE WITH

- 3", 4" and 6" Sewer & Drain pipe
- 3", 4" and 6" corrugated pipe
- 3", 4" and 6" triple wall pipe
- 3", 4" and 6" belled end pipe
- 3", 4" and 6" SDR fittings
- 6" round Catch Basin

Round Atrium Grates

Part No.	Color	Descriptions	Dimensions (inches) L x W x H	UPC	Weight Each Lbs.	Carton QTY
FSD-030-A	Green	3" Round / Atrium Grate	3.63 x 3.63 x 3.75	0 185780 1326 1	0.15	40
FSD-040-A	Green	4" Round / Atrium Grate	4.75 x 4.75 x 4	0 185780 1327 8	0.22	40
FSD-064-A	Black	6" Round / Atrium Grate	6.75 x 6.75 x 5	0 185780 1328 5	0.60	40



APPLICATIONS

For use in areas where space restricts the use of a full size drain basin.

FEATURES

- Removeable Grate
- Durable polypropylene construction
- UV inhibitors to reduce sun damage

USE WITH

- 3" and 4" sewer and drain pipe
- 3" and 4" corrugated pipe
- 3" and 4" triple wall pipe
- 4" Sch. 40 pipe

Square Grate with Adapter Basin - Meets Load Rating A (See page 1)

Part No.	Color	Descriptions	Dimensions (inches) L x W x H	UPC	Weight Each Lbs.	Carton QTY
FSD-044-SCB	Black	6" Square / Bottom Outlet - Removeable Grate	6.25 x 6.25 x 2.5	0 185780 1317 9	0.88	10



Pop-Up Emitters - Meets Load Rating A (See page 1)

Part No.	Color	Descriptions	Dimensions (inches) L x W x H	UPC	Weight Each Lbs.	Carton QTY
FSD-343-EL	Green	3" Pop-Up Emitter with S&D Elbow	6 x 6 x 7	0 185780 1329 2	0.60	25
FSD-344-EL	Green	4" Pop-Up Emitter with S&D Elbow	6 x 6 x 6.5	0 185780 1330 8	0.80	20

Valve Boxes



APPLICATIONS

Use to cover, protect and provide access to irrigation controls, telephone, electrical or low voltage landscape lighting junctions.

FEATURES

- Lids snap on for easy access or screw on for added security
- Lids available in 3 colors
- Durable polypropylene construction
- UV inhibitors to reduce sun damage

Round Valve Boxes with Lids - Meets Load Rating A (ANSI/SCTE light duty, pedestrian - See page 1)

Part No.	Color	Descriptions	Dimensions (inches) D1 x D2 x H	UPC	Weight Each Lbs.	Carton QTY
FSD-60	Green	6" Round Box & Lid Combo	8.25 x 8.25 x 9.25	0 185780 1333 9	1.07	6
FSD-63	Purple	6" Round Box & Lid Combo	8.25 x 8.25 x 9.25	0 185780 1334 6	1.07	6
FSD-62	Tan	6" Round Box & Lid Combo	8.25 x 8.25 x 9.25	0 185780 1335 3	1.07	6
FSD-100	Green	10" Round Box & Lid Combo	13 x 13 x 10.25	0 185780 1336 0	3.18	6
FSD-103	Purple	10" Round Box & Lid Combo	13 x 13 x 10.25	0 185780 1337 7	3.18	6
FSD-102	Tan	10" Round Box & Lid Combo	13 x 13 x 10.25	0 185780 1338 4	3.18	6



APPLICATIONS

Use to cover, protect and provide access to irrigation controls, telephone, electrical or low voltage landscape lighting junctions.

FEATURES

- Lids snap on for easy access or screw on for added security
- Small access door in lid for viewing of meter
- Durable polypropylene construction
- UV inhibitors to reduce sun damage

Meter Box - Meets Load Rating A (ANSI/SCTE light duty, pedestrian - See page 1)

Part No.	Color	Descriptions	Dimensions (inches) L x W x H	UPC	Weight Each Lbs.	Carton QTY
FSD-120-MR	Green	12" x 17" Meter Box & Lid Combo	21 x 15.5 x 12.38	0 185780 1346 9	9.66	6



APPLICATIONS

Use to cover, protect and provide access to irrigation controls, telephone, electrical or low voltage landscape lighting junctions.

FEATURES

- Lids snap on for easy access or screw on for added security
- Lids available in 3 colors
- Durable polypropylene construction
- UV inhibitors to reduce sun damage

Rectangular Valve Boxes with Lids - Meets Load Rating A (ANSI/SCTE light duty, pedestrian - See page 1)

Part No.	Color	Descriptions	Dimensions (inches) L x W x H	UPC	Weight Each Lbs.	Carton QTY
6" DEEP						
FSD-120-6	Green	6" Deep - 12"x17" Box & Lid Combo	19.25 x 14 x 7.25	0 185780 1342 1	6.38	6
FSD-123-6	Purple	6" Deep - 12"x17" Box & Lid Combo	19.25 x 14 x 7.25	0 185780 1343 8	6.38	6
FSD-122-6	Tan	6" Deep - 12"x17" Box & Lid Combo	19.25 x 14 x 7.25	0 185780 1344 5	6.38	6
12" DEEP						
FSD-120	Green	12" Deep - 12"x17" Box & Lid Combo	21 x 15.5 x 12.38	0 185780 1339 1	9.00	6
FSD-123	Purple	12" Deep - 12"x17" Box & Lid Combo	21 x 15.5 x 12.38	0 185780 1340 7	9.00	6
FSD-122	Tan	12" Deep - 12"x17" Box & Lid Combo	21 x 15.5 x 12.38	0 185780 1341 4	9.00	6



APPLICATIONS

Use to add height to rectangular valve boxes for deeper installations of irrigation controls, telephone, electrical or low voltage landscape lighting junctions.

FEATURES

- Durable polypropylene construction
- UV inhibitors to reduce sun damage

Valve Box Riser - Meets Load Rating A (ANSI/SCTE light duty, pedestrian - See page 1)

Part No.	Color	Descriptions	Dimensions (inches) L x W x H	UPC	Weight Each Lbs.	Carton QTY
FSD-B124-X	Green	6" Deep - 12"x17" Box Riser	19 x 14 x 6.75	0 185780 1345 2	4.01	6

Notes

[illegible]

[illegible]



www.StormDrainWMS.com

United States

300 S. Dayton Street
Davison, MI 48423
PH: (810) 653-9626
FX: (810) 653-8714

Canada

850 Phillip Street E.
Sarnia, Ontario N7V1Z6
PH: (519) 332-6711
FX: (519) 332-8610



www.fernco.com